

October 2024
April 2025
Application Guidelines
Master's Program
Yokohama National University
Graduate School of
Engineering Science

How to Apply

All applicants must send a set of all required documents by post after applying online.

1. Required environment for the application

In order to complete the application procedure, applicants need PCs connected to the Internet, printers and their own email address.

2. Overview of the Application Procedure

Step 1 – Register

- 1) Visit YNU Web Application System;
<https://e-apply.jp/e/ynu/>
- 2) Select the preferred Department, etc. according to the guidance of the window.
- 3) Register your name, e-mail address, and other personal information.
- 4) You will receive a confirmation email after registration procedure is completed.

Step 2 – Apply online

- 1) Log in to YNU Web Application System, and fill in all the required information.
- 2) Select payment method for your application fee after you apply.
- 3) Pay the application fee as your choice.
- 4) After you have received an email that your payment was confirmed, print out all the documents via the YNU Web Application System.

Step 3 – Submission of the application documents

- 1) Send all the printed-out application documents and other required certificates by post in the designated application period.
- 2) Application procedure is only completed when YNU received all required documents by post.

Note: You **must** submit printed-out documents by post in order to complete the application. Only filling out the online application is not enough to successfully complete the application procedure.

Please read the instructions of this application guideline and the YNU Web Application System carefully.

Introduction

This booklet provides application guidelines for admission to master's programs at the Graduate School of Engineering Science of Yokohama National University in October 2024 and April 2025.

Prospective students are requested to carefully read this extensive booklet, find the information that pertains to them, and apply with the correct procedures based on an accurate understanding.

File an application after close consultation with your prospective supervisor or with faculty members serving as contact persons in Table 1 (see page 5).

Go to the website of the Graduate School of Engineering Science, Yokohama National University to find out about the school and see research conducted by each faculty member.

<https://www.fse.ynu.ac.jp/index.html>

[Security export control]

Pursuant to the Foreign Exchange and Foreign Trade Act, Yokohama National University (YNU) stipulates YNU Regulations for Security Export Control to rigorously screen admission of international students with respect to exported goods, technical assistance, and people-to-people exchange. Accordingly, some international students may have limited access to research and educational programs despite their preference. Be aware of such restrictions and consult with your intended supervisor prior to filing your application. All enrolled students, regardless of nationality, are requested to sign a pledge to comply with the Foreign Exchange and Foreign Trade Act. For more details, visit the following website of the YNU's Research Initiatives and Promotion Organization.

<https://www.ripo.ynu.ac.jp/researcher/start/security/>

[Handling of personal information]

Personal information will be handled under the Act on the Protection of Personal Information and the Policies on the Protection of Personal Information held by YNU.

- (1) Personal information provided in the applicant's entrance examination results and application materials may also be used for the following purposes in addition to those related to the selection of applicants for admission to YNU.
 - ① Contacting successful applicants (sending materials related to welfare benefits such as scholarships and insurance, events after admission, and Co-op) and enrollment procedures.
 - ② Organizing classes after enrollment and sending materials related to welfare such as entrance fee waiver (except for international students) and tuition fee waiver upon application by the applicant.
 - ③ Academic affairs after enrollment (student registration management, academic guidance, etc.)
 - ④ Public relations, surveys and research at the university (including surveys and analysis for the improvement of admission selection methods and university education)

- ⑤ Personal information of enrolled students may be provided to the extent necessary for enrollment procedures for the YNU Alumni Association.

When presenting the results of surveys and research, the information will be processed in such a way that individuals cannot be identified.

Personal information will not be used or provided for any other purposes.

- (2) When using the information in the various works described in (1) above, some of the operations may be performed by a contractor entrusted by YNU. All or part of the personal information obtained will be provided to the contractor to the extent necessary to perform the work entrusted to the contractor.

[Student Dormitory]

Those who wish to move into the dormitories should check the application guide on the Student Dormitories page of the Student Support Division website of the Academic Affairs and International Strategy Department and complete the application procedures within the time frame.

<https://www.gakuseisupport.ynu.ac.jp/>

[IMPORTANT]

The selection method may be modified due to any changes in unforeseen circumstances related to natural disasters, man-made disasters, epidemics etc. As for the latest information, please visit the "Admissions" page on the Graduate School's website (<https://www.fse.ynu.ac.jp/english/index.html>) regularly.

Contents

I. Admission Guidelines for General Students (General Admission and Special Admission)	• • • p.6
II. Admission Guidelines for Special Screening of Professionals	• • • p.25
III. Overview of Master's Programs	• • • p.34
IV. Specialization and research field of supervisors	• • • p.39
V. Education under special exception regarding educational systems pursuant to Article 14 of the Standards for Establishment of Graduate Schools (Special exception for graduate education for professional engineers and researchers)	• • • p.46
VI. Students with extended enrollment status	• • • p.47
VII. Use of ChatGPT and Other Generative AI tools	• • • p.49
VIII. Access	• • • p.49

Note on terminology: In these admission guidelines, "master's program" refers to the first two years of a graduate program and "doctoral program" refers to the last three years of a graduate program.

Screening process

Online application: Friday, May 24 – Tuesday, June 4, 2024

Application period by post: Friday, May 31 – Thursday, June 6, 2024

Special Admission

General Admission

(rejected applicants can still take a written examination)

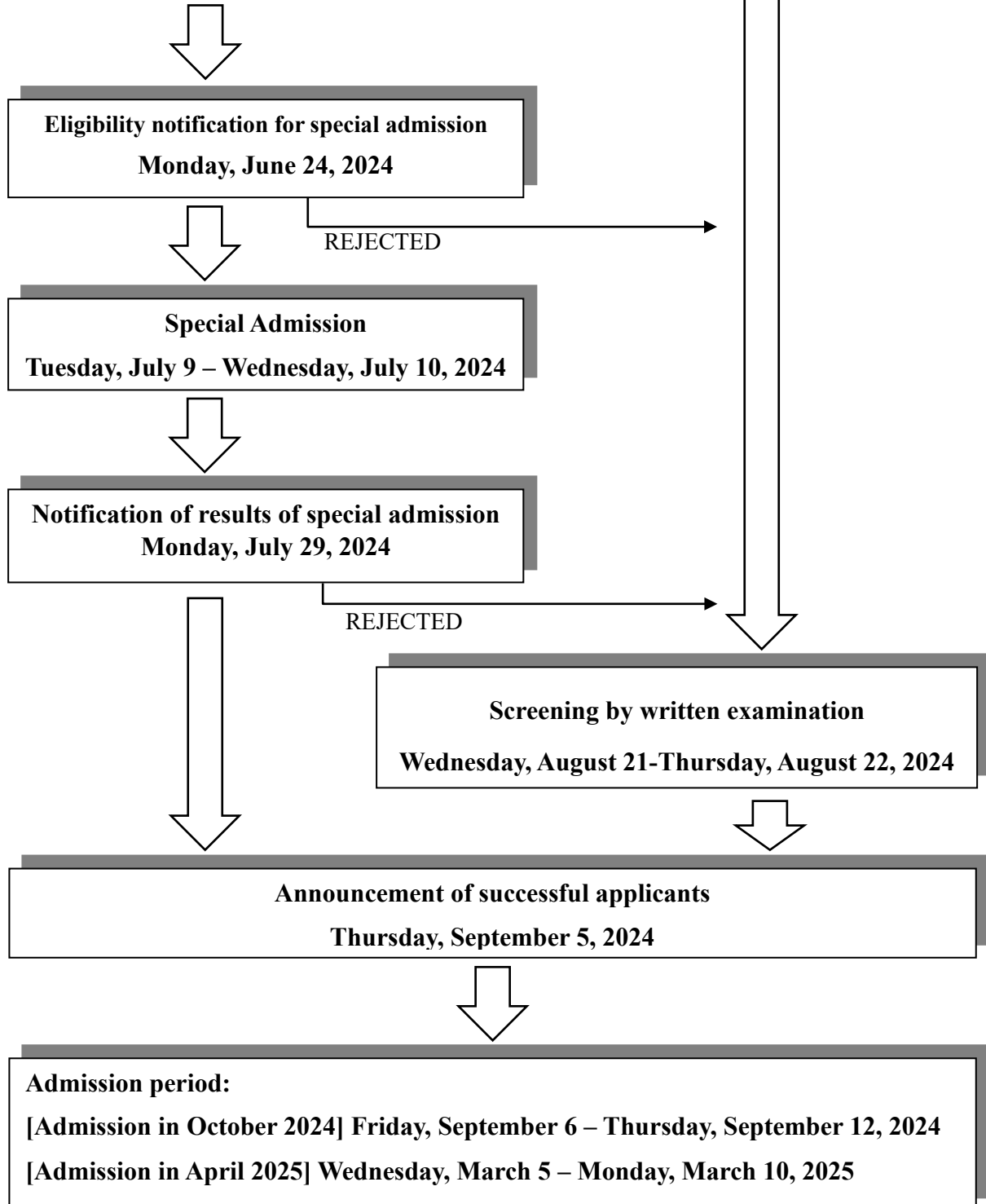


Table 1 Faculty members to consult with regarding respective specializations.

Department	Unit/ Specialization	Contact persons
Mechanical Engineering, Materials Science, and Ocean Engineering	Mechanical Engineering / Mechanical Engineering, Aerospace Engineering, Process Integration	Associate Prof. FUCHIWAKI Ohmi fuchiwaki-ohmi-xk@ynu.ac.jp
	Materials Science Frontier/ Materials Science Frontier, Aerospace Engineering, Process Integration	Associate Prof. OONO Naoko oono-naoko-yh@ynu.ac.jp
	Systems Design for Ocean-Space/ Systems Design for Ocean-Space, Aerospace Engineering	Associate Prof HIRAKAWA Yoshiaki hirakawa-yoshiaki-jd@ynu.ac.jp
Chemistry and Life Science	Advanced Chemistry/ Chemistry, Applied Chemistry, Energy and Sustainable Chemistry	Associate Prof. UBUKATA Takashi ubukata-takashi-wy@ynu.ac.jp
	Chemistry Applications and Life Science/ Chemistry Applications and Life Science, Energy and Sustainable Chemistry	Associate Prof. MATSUZAWA Koichi matsuzawa-koichi-zs@ynu.ac.jp
Mathematics, Physics, Electrical Engineering and Computer Science	Mathematical Sciences/ Mathematical Sciences	Prof. KAJIWARA Takeshi kajiwara-takeshi-rj@ynu.ac.jp
	Physics/ Physics	Associate Prof. NAKAMURA Shogo nakamura-shogo-zg@ynu.ac.jp
	Electrical and Computer Engineering/ Applied Physics, Information Systems, Electrical and Computer Engineering, Integrated Electronics	Associate Prof. OYA Takahide oya-takahide-vx@ynu.ac.jp

* Units are categories for conducting entrance examinations. Admitted students are assigned to one of the above specializations.

* Before filing your application, consult with the faculty member in charge of your desired field of study or faculty members serving as contact persons.

I. Admission Guidelines for General Students (General Admission and Special Admission)

1. Number of students admitted

[Admission in October 2024]

Japanese students and Private expense international students

Department	Unit*	Specialization	Educational program	Number of students admitted
Chemistry and Life Science	Advanced Chemistry	Chemistry	PSD	A few
		Applied Chemistry		
	Chemistry Applications and Life Science	Energy and Sustainable Chemistry	TED	
		Chemistry Applications and Life Science	TED or PED	
		Energy and Sustainable Chemistry	TED	

[Admission in April 2025]

Department	Unit*	Specialization	Educational program	Number of students admitted
Mechanical Engineering, Materials Science, and Ocean Engineering	Mechanical Engineering	Mechanical Engineering	TED or PED	109
		Aerospace Engineering		
		Process Integration		
	Materials Science Frontier	Materials Science Frontier	TED or PED	
		Aerospace Engineering		
		Process Integration		
Systems Design for Ocean-Space	Systems Design for Ocean-Space	TED or PED		
	Aerospace Engineering			
Chemistry and Life Science	Advanced Chemistry	Chemistry	PSD	107
		Applied Chemistry	TED	
		Energy and Sustainable Chemistry		
	Chemistry Applications and Life Science	Chemistry Applications and Life Science	TED or PED	
		Energy and Sustainable Chemistry	TED	
Mathematics, Physics, Electrical Engineering and Computer Science	Mathematical Sciences	Mathematical Sciences	SD	146
	Physics	Physics	PSD	
	Electrical and Computer Engineering	Information Systems	TED or PED	
		Electrical and Computer Engineering		
		Integrated Electronics		

* Units are categories for conducting entrance examinations. Admitted students are assigned to one of the above specializations.

2. Eligibility

Eligibility is acknowledged for applicants with any of the following profiles:

- (1) Graduates or prospective graduates (prior to admission to our graduate school) from universities defined in Article 83 of the School Education Act
- (2) Applicants awarded a bachelor's degree or expected to be awarded the same prior to admission to our graduate school pursuant to Paragraph 7, Article 104 of the School Education Act (National Institution for Academic Degrees and Quality Enhancement of Higher Education) ^[Note 2]
- (3) Applicants who have completed or are expected to complete (prior to admission to our graduate school) 16 years of school education in another country
- (4) Applicants who have completed or are expected to complete (prior to admission to our graduate school) 16 years of school education in Japan by taking correspondence courses offered by foreign schools
- (5) Applicants who have completed or are expected to complete (prior to admission to our graduate school) programs in Japan specified by the Minister of Education, Culture, Sports, Science and Technology among educational facilities that are recognized as universities according to the school education systems of other countries (completion of such programs must be recognized as completion of 16 years of school education in those countries)
- (5)-2 At the relevant university or other overseas school (limited to institutions accredited by the party recognized by the country's government or relevant institutions, or those designated to be such by the Minister of MEXT, in regard to comprehensive education and research activities), you have received a degree corresponding to a bachelor's degree through the completion of three or more years of study (including the completion of the relevant study in Japan of correspondence courses from the relevant overseas schools and the completion of coursework at academic institutions positioned in the education system of the relevant country designated in the preceding item).
- (6) Applicants who completed specialized programs at specialized training colleges specified by the Minister of Education, Culture, Sports, Science and Technology after the date specified by the Minister (such programs must last for four years or longer and satisfy requirements specified by the Minister)
- (7) Applicants specified by the Minister of Education, Culture, Sports, Science and Technology (Announcement No. 5 by the Ministry of Education, Science and Culture in 1953)
- (8) Applicants who, on March 31, 2024 (for admission in October 2024) or March 31, 2025 (for admission in April 2025), will have been enrolled for three years or longer (excluding any period of leave of absence) in universities defined in Article 83 of the School Education Act, and acquired credits required by our graduate school with excellent achievements ^[Note 3, 5]
- (9) Applicants who were enrolled in other graduate schools pursuant to Paragraph 2, Article 102 of the School Education Act with recognition of academic ability befitting study at our graduate school ^[Note 5]
- (10) Applicants whose academic achievements were assessed individually by our graduate school and are acknowledged to be comparable or superior to graduates from universities, and who will reach age 22 by the time they enroll in our graduate school ^[Note 4, 5]

[Note 1] Under no circumstances will eligibility be acknowledged for applicants who do not satisfy the above

requirements.

[Note 2] In reference to Eligibility (2), persons expecting to be awarded a bachelor's degree prior to admission to our graduate school are defined as persons expecting to complete their major in technical colleges or other colleges that are recognized as satisfying the requirements of the National Institution for Academic Degrees and Quality Enhancement of Higher Education (NIAD-QE) pursuant to Paragraph 1, Article 6 of the Degree Regulations, and have applied by April 2024 (for admission in October 2024) or October 2024 (for admission in April 2025) to NIAD-QE to be awarded their degree.

[Note 3] Eligibility (8) is acknowledged for applicants who satisfy the following requirements:

[1] At the end of March 2024, applicants must rank in the top 5% in their affiliated departments (or have earned credits with comparable grades) or have obtained at least 80 points in at least $\frac{3}{4}$ of all earned credits.

[2] As a general rule, applicants claiming eligibility must pass all required courses and earn at least 90 credits by the end of the second year.

[Note 4] Eligibility (10) can be claimed by persons who cannot claim Eligibility (1)–(9), but whose academic capacity is recognized to be comparable or superior to a university graduate after individual assessment of their eligibility by our graduate school, and who will be over 22 years of age by the time they enroll in our graduate school.

* Typically, applicants claiming eligibility include graduates of technical colleges, specialized training colleges, other colleges, other schools, and other educational facilities without university diplomas, as well as international students who graduated universities that do not require 16 years of study and either have or will have conducted at least one year of research as research students or researchers at Japanese or foreign universities, inter-university research institutes, or comparable research institutes prior to admission to our graduate school.

[Note 5] Applicants wishing to claim Eligibility (5)-2, (8)–(10) must first undergo an eligibility assessment. Consult with faculty members of your desired field and submit the following documents in an envelope to the Graduate School of Engineering Science Section between **Monday, May 13 and Wednesday, May 15, 2024**. Application documents are accepted by post or directly at the section office as long as they meet the deadline. (The section office is open from 9:00 a.m. until 5:00 p.m. except for a break from 12:45 p.m. to 1:45 p.m.)

Necessary designated forms should be downloaded from the Graduate School's website.

[Documents submitted by applicants claiming Eligibility (8)]

[1] Detailed statement of application documents (Attachment 1)

[2] Application for certificate of eligibility (Form 9)

[3] Certificate of eligibility and recommendation letter (Form 14)

*To be sealed by the person who wrote the recommendation

[4] Transcript from the university the applicant is enrolled in

[5] Documents presenting course criteria (credits required for graduation both in total and by category, list of subjects offered in each category, etc.)

[6] An addressed return envelope (Size-L3) with 354 yen worth of stamps for express mail

[Documents submitted by applicants claiming Eligibility (5)-2 , (9) or (10)]

- [1] Detailed statement of application documents (Attachment 1)
- [2] Application for certificate of eligibility (Form 12)
- [3] Eligibility Accreditation Record (Form 13)
- [4] Certificate of (expected) graduation or enrollment period from the most recent educational level
- [5] Transcript from the most recently completed educational level
- [6] Record of Research Achievements (Form 16)
- [7] (Desired) Research Plan (Form 17)
- [8] An addressed return envelope (Size-L3) with 354 yen worth of stamps for express mail

The eligibility assessment is conducted by the Graduate School of Engineering Science, Yokohama National University. The result is delivered by post on **Monday, May 27, 2024**. If your eligibility is recognized, proceed by applying within the specified period. If you have any questions, contact the Graduate School of Engineering Science Section.

3. Application procedure

After applying online, enclose the application documents (Please see below 4) in a Size-2 envelope (24 cm × 33.2 cm). Download the label for filing an application (Form 30) from YNU Web Application System. Attached the filled-out label to the envelope and send it via registered mail from the post office window.

3-1. Online Application

The online application form must be completed during the period **between Friday, May 24, 2024 and Tuesday, June 4, 2024**.

YNU Web Application System URL: <https://e-apply.jp/e/ynu/>

[Note]

- 1) Please note that an error message will show if there is no transmission for 60 minutes.
- 2) To temporarily suspend the input work in the Web application system, click "Save temporarily" Please log out. After re-logging in, input can be resumed. Other methods Input operation will be canceled if you interrupt the input work with.
- 3) If you have any questions about YNU Web Application System, please contact the following.

Career-tasu, Inc. Learning and Education Application Service Support Center
TEL : 0120-202079 (Reception time : from Monday to Friday, 10:00 — 18:00)
Email : cvs-web@career-tasu.co.jp

Only filling out the online application is not enough to successfully complete the application procedure. Send all the application forms printed out and other required materials by post. Please see below 3-2 to 4.

3-2. Application by post

Submit your application documents by registered mail **between Friday, May 31 and Thursday, June 6, 2024**. Applications are only accepted by registered mail and only during the application period. No direct applications are accepted, nor is application by email.

Send your application as early as possible keeping in mind the time required for delivery by the postal service lest it reach us after the deadline and be rejected. As an exception, an application sent by **registered express mail that is postmarked by the originating post office by Wednesday, June 5, 2024** will be accepted even if it reaches us after the deadline.

[Note 1] Some post offices do not provide postal services on Saturdays, Sundays, and holidays. Make sure to check the schedule of your local post office.

[Note 2] Applicant who lives in abroad should send application documents by post through representative who lives in Japan. In the case of sending documents from abroad as needed, please send by recorded mail such as EMS (Express Mail Service) to reach us no later than **June 6, 2024**. **【by due date without fail】** However, return address is only in Japan.

[Note 3] We accept the application documents at the reception counter only through academic supervisor who gave provisional acceptance letter to applicant who lives in abroad.

3-3. Address for filing an application

Graduate School of Engineering Science Section
Yokohama National University
79-5 Tokiwadai, Hodogaya-ku, Yokohama, 240-8501 JAPAN

4. Application documents

Necessary designated forms should be downloaded from YNU Web Application System and the Graduate School's website. Be sure to print them only on **one side** of **white A4-sized paper**.

Application documents	Note	Form number
Detailed statement of application documents	<u>Print out the form after downloading it from the Graduate School's website.</u> Enclose the application documents in the order listed in this form.	Attachment 2 *G
Application for admission	<u>Print out the form through YNU Web Application System after filling in all the required information (your name, address, phone#, educational history, Preferred Department, Unit, Specialization, Program, Academic supervisor, etc.)</u> Attach one 4-cm by 3-cm upper body shot taken in the last 3 months on a solid-color background without any headwear to your application. [Note] Please attach the same photo as the photo attached to the Application for admission on the printed Admission ticket (Please see below 5).	1-1 *Y
Certificate of (expected) graduation	To be prepared by the president or dean of the school where the applicant was or is enrolled. (Applicants claiming Eligibility (8) must also submit a certificate of enrollment.) - If a copy of a diploma is used as a substitute, the original must be presented for verification at the Graduate School of Engineering Science Section. - International students are required to submit the certificate of degree or a document stating a degree (except for applicants claiming Eligibility (1)). - Any certificate written in a language other than Japanese or	

	English must be accompanied by a Japanese or English translation.	
Transcript	To be prepared by the president or dean of the school where the applicant was or is enrolled. Any certificate written in a language other than Japanese or English must be accompanied by a Japanese or English translation.	
Certificate of resident status (only international students)	Foreign residents of Japan are requested to submit copies of both sides of their resident cards. Other foreigners are requested to submit copies of their passports.	
Curriculum Vitae of international student (only international students)	<u>Print out the form through YNU Web Application System after filling in all the required information.</u> (excluding applicants claiming Eligibility (1)).	19-1 *Y
Provisional Acceptance Letter (only international students)	<u>Print out the form after downloading it from the Graduate School's website.</u> The submitted letter needs to be signed by your prospective supervisor. The signature does not necessarily have to be a handwritten original.	19-2 *G
Summary of research to date and research plan (Advanced Chemistry)	<u>(Only applicants for Advanced Chemistry Unit should submit)</u> <u>Print out the form after downloading it from the Graduate School's website.</u>	21 *G

Entrance application fee	<p>Amount: 30,000 yen Payment period: Make the payment by <u>Tuesday, June 4, 2024</u> Payment method According to payment guide of YNU Web Application system, please pay the application fee. For details of payment method, please see below. YNU Web Application system → introduction→ Application Fee</p> <p>(1) Applicants living in Japan [Payment at a convenience store] (Payments can only be made through Seven Eleven, Lawson, Ministop, FamilyMart, and Circle K Sunkus.) Make a payment using an information terminal in a store. (Payments cannot be made from an ATM. Make the payment at a cash register.)</p> <p>(2) Applicants living outside Japan Payments can be made by credit card (VISA, MasterCard, JCB, American Express, MUFG, DC, UFJ, and NICOS) and online with China UnionPay.</p> <p>[Note 1] Applications will not be accepted without payment of the entrance application fee. [Note 2] All charges involved are to be covered by the applicants. [Note 3] Payments are not required from Japanese government-financed (MEXT) international students (enclose the original government sponsorship certificate in the application; copies are not acceptable).</p> <p>* Waiver of entrance application fee for affected people in the area subject to the Disaster Relief Act and the like YNU waives the entrance application fee for applicants affected by disasters to ensure they have the opportunity to seek admission. For more details, please visit our website (https://www.ynu.ac.jp/exam/).</p>	
--------------------------	--	--

***G The Graduate School's website**

***Y YNU Web Application System**

[Note 1] Applicants for special admission must submit the following documents in addition to the documents listed above.

Documents required to apply for special admission	Note	Form number
Certificate of eligibility	<p><u>Print out the form after downloading it from the Graduate School's website.</u> (The certificate must be sealed by the person who prepared it) Description of academic ranking or proof of the percentage of grades with 80 points or more among all earned credits.</p>	15-1 *G
Recommendation letter	<p><u>Print out the form after downloading it from the Graduate School's website.</u> The recommendation letter for special admission can be prepared by a supervisor or anyone who knows the applicant well. The letter can be a self-recommendation if there is no such person for a compelling reason.</p>	15-2 *G

Motivation letter	<u>Print out the form after downloading it from the Graduate School's website.</u> The reason for choosing a specialization and a supervisor, how the intended study is related to the previous study, and research plan after enrollment should be stated on one page of A4 paper. As necessary, consult with the contact person of each unit or your intended supervisor.	18 *G
Enrollment pledge	<u>Print out the form after downloading it from the Graduate School's website.</u>	20 *G
Return envelope	<u>Print out the label for return envelope (Form 31) through YNU Web Application System after filling in all the required information. Then, attached the filled-out label to a Size-2 envelope (24 cm × 33.2 cm).</u> Attach an express mail stamp (400 yen). Our return mail can only be sent to a Japanese address. Applicants living abroad are requested to specify recipients in Japan who can receive mail on their behalf.	31 *Y

[Note 2] Exemption from submission of certain documents

Applicants claiming Eligibility (8)– (10) do not need to resubmit documents that have already been submitted for the application for certificate of eligibility.

5. Admission ticket for examination

We inform you by e-mail that we have officially accepted the application by **Wednesday, June 19, 2024**. In accordance with the notes stated in the e-mail, please login to YNU Web Application System and print out the Admission ticket for examination. Please attach the same photo as the photo attached to the Application for admission on the printed Admission ticket and bring it on the examination day. You **must not** write anything on both the front and the back of your admission ticket.

6. Screening methods

Admission is based on either Special Admission or General Admission. See the diagram on Page 3 to learn the procedure.

(1) Selection of screening method

Select either Special Admission or General Admission to have your academic ability evaluated. Special admission can be chosen by applicants with recommendations from their home schools who satisfy Requirements [1] and [2] below.

[1] Applicants claiming Eligibility (1)–(7)

[2] Applicants who ranked in the top 1/3 in academic performance at their affiliated departments or their equivalents at the end of the third year of their studies. If their universities do not disclose such ranking, applicants must have scored 80 points or more in at least half of their total credits. (Applicants enrolled in specialized courses at colleges of technology will be judged based on their academic performance upon their completion.)

(2) Decision of eligibility

The eligibility of applicants is determined based on their submitted application documents and their choice between special admission and General Admission. Applicants disqualified for special admission can still take General Admission. The decision on the eligibility for special admission will be sent by post on **Monday June 24, 2024**.

(3) Special admission

Once eligibility is confirmed by the assessment of application documents, special admission is conducted to determine successful applicants based on an oral examination, score from an English proficiency test (either TOEIC or TOEFL), review of application documents, and an interview to check their academic ability and innate qualities for conducting further research. The oral examination is conducted to evaluate English, as well as knowledge on basic and specialized subjects. Alternatively, applicants are requested to give a presentation and answer questions regarding their latest graduate work or intended research at our graduate school.

Go to 8(1) to find out how the oral examination is conducted. During interviews, applicants are requested to present their past research and answer questions to judge their suitability to our programs. Applicants who miss either the oral examination or the interview, or if they fail to submit valid TOEIC or TOEFL score certificates will not be admitted.

Applicants rejected after special admission can take a General Admission without taking any other procedures.

(4) General Admission

Academic abilities are tested based on the score from an English proficiency test (either TOEIC or TOEFL), Subject I and Subject II, along with review of application documents and interviews.

Go to 8(2) to find out how Subject I and Subject II are conducted. During interviews, applicants are requested to present their past research and answer questions to judge their suitability to our programs. Applicants who miss Subject I or II or the interview, or if they fail to submit valid TOEIC or TOEFL score certificates will not be admitted. General Selection applicants who wish to apply to the Mathematical Sciences Unit can take the original examination (English) administered by the Mathematical Sciences Unit in lieu of submitting TOEIC or TOEFL score certificates (except for applicants who submitted TOEIC or TOEFL score certificates when taking the Special Admission) (For details, see below 8(4) "The Mathematical Sciences Unit's Original Examination (English)").

Applicants claiming Eligibility (8) will ultimately be judged based on their transcripts for three years of completed studies. Interviews may be conducted as respective units deem necessary. The date and venue for such an interview will be notified by the relevant unit.

Submit your transcript for three years of completed studies to the Graduate School of Engineering Science Section by **Tuesday, February 18, 2025**.

7. Schedule for examination and interview

(1) Special admission

Date	Subject	Score	Remarks
-	English	100	Screening is based on original score certificates of TOEIC or TOEFL.
-	Application documents	400	-
Tuesday, July 11 to Wednesday, July 12	Oral examination		-
	Interview		

- Score certificates of TOEIC or TOEFL (For details, see below "(9): TOEIC and TOEFL scores ".) are collected during the oral examination.
- The dates and venues for the oral examination and interview are notified by post on **Monday, June 24, 2024**.
- The result of the examination is notified by post on **Monday, July 29, 2024**.

(2) General Admission

Date	Subject	Score	Remarks
-	English	100	Screening is based on original score certificates of TOEIC or TOEFL.
Wednesday, August 21	Subject I	200 (Unit of Chemistry Applications and Life Science: 300 points)	10:30–12:30
	Subject II	200 (Unit of Chemistry Applications and Life Science: 100 points)	13:30–15:30 (Except for Unit of Advanced Chemistry and Unit of Chemistry Applications and Life Science) Date and venue for Oral examination will be specified by the announcement of the assigned examination room (see below)
Wednesday, August 21 to Thursday, August 22	Interview	-	Date and venue for examination will be specified by the announcement of the assigned examination room (see below).
Thursday, August 22	English	100	10:30–11:30 (Only for applicants to the Mathematical Sciences Unit who take the original examination (English))

- Examinees must enter their assigned rooms 20 minutes prior to their examination.
- Score certificates of TOEIC or TOEFL (For details, see below "(9): TOEIC and TOEFL scores ".) are collected during the examination on Subject I. (Applicants to the Mathematical Sciences Unit must refer to 8 (4) "The Mathematical Sciences Unit's Original Examination (English)").
- Applicants who take a General Admission after being rejected in a Special Admission and have submitted score certificates from TOEIC or TOEFL at the time of Special Admission, does not need to submit the score certificate again during the General Admission. In this case, the applicant can submit the score

certificate again at the time of the General Admission.

- Language dictionaries (electronic dictionaries are not acceptable) may be used for academic exams only.
- Applicants may use only Japanese or English in their answers in the academic subjects and interviews.
- Subject I, II and interview are conducted on the campus of the Yokohama National University in Tokiwadai, Hodogaya-ku, Yokohama
- Room assignment will be posted on YNU Web Application System **by Friday, August 2, 2024**.

8. Examination

(1) Special admission: Oral examination

Unit	Specialization	Oral examination
Mechanical Engineering	Mechanical Engineering	A presentation of the applicant's graduate work or intended research for about 10 minutes using a computer is followed by an oral examination regarding the presented topic. (*)
	Aerospace Engineering	
Materials Science Frontier	Materials Science Frontier	A presentation of the applicant's graduate work or intended research for about 10 minutes using a computer is followed by an oral examination regarding the presented topic. (*)
	Aerospace Engineering	
Systems Design for Ocean-Space	Systems Design for Ocean-Space	An oral examination is conducted on hydrodynamics, material dynamics, and rigid-body dynamics.
	Aerospace Engineering	
Advanced Chemistry	Chemistry	A presentation of the applicant's graduate work or intended research for about 7 minutes using a computer is followed by an oral examination regarding the presented topic and basics of chemistry. (*)
	Applied Chemistry	
	Energy and Sustainable Chemistry	
Chemistry Applications and Life Science	Chemistry Applications and Life Science	An oral examination is conducted to test the applicant's ability to explain and discuss chemistry application, life science, energy, and sustainable chemistry. Examinees are also requested to answer questions regarding their past research achievements and other initiatives.
	Energy and Sustainable Chemistry	
Mathematical Sciences	Mathematical Sciences	An oral examination is conducted on basic and specialized subjects. Examinees are also requested to answer questions after presenting their graduate work or intended research for about 7 minutes. (*)
Physics	Physics	An oral examination is conducted with basic and specialized subjects related to physics.
Electrical and Computer Engineering	Applied Physics	An oral examination is conducted on basic and specialized subjects related to electrical and computer engineering. Alternatively, examinees are requested to answer questions after presenting their graduate work or intended research by using a computer. (*)
	Information Systems	
	Electrical and Computer Engineering	

*** Note**

On the day of the oral examination, applicants to units that require presentations must bring USB memory sticks containing their presentation files and printouts of them on A4 paper. The organizer will prepare the necessary projectors and computers, but applicants may also use their own laptops.

(2) General Admission: Academic subjects for examination

Unit	Subject I (200 points) (Unit of Chemistry Applications and Life Science: 300 points)	Subject II (200 points) (Unit of Chemistry Applications and Life Science: 100 points)
Mechanical Engineering	[1] Mathematics (50 points) [2] Thermodynamics (50 points) [3] Strength of materials (50 points) A total of 150 points are converted into 200 points	[1] Dynamics of machines (50 points) [2] Fluid dynamics (50 points) [3] Control engineering (50 points) A total of 150 points are converted into 200 points
Materials Science Frontier	[1] Analysis (differentiation, integration, and differential equations) [2] Linear algebra (matrices and their applications, and simultaneous linear equations) [3] Mechanics [4] Physical chemistry (thermodynamics) [5] Statistical physics 5 questions in total (40 points each)	[1] Material mechanics [2] Solid-state electron theory [3] Crystal plasticity [4] Metallography I (crystal, phase diagrams, and related fields) [5] Metallography II (diffusion, recovery, recrystallization, phase transformation, and related fields) 5 questions in total (40 points each)
Systems Design for Ocean-Space	[1] Analysis (differentiation, integration, and differential equations) [2] Linear algebra (50 points) [3] Rigid-body dynamics (50 points) A total of 150 points are converted into 200 points	[1] Hydrodynamics (50 points) [2] Material dynamics (50 points) [3] Vibration engineering (50 points) [4] Marine engineering (vessel statics and stability) (50 points) [5] Aerospace engineering (mechanics of mass points of aircraft and cosmonautic vehicles) (50 points) Answer 3 questions out of 5 options. A total of 150 points are converted into 200 points
Advanced Chemistry	[1] Mathematics (analysis, linear algebra, and differential equations) [2] Basic inorganic chemistry [3] Basic analytical chemistry [4] Basic physical chemistry [5] Basic organic chemistry 5 questions in total (40 points each)	Oral examination is conducted on the basic knowledge of overall chemistry as well as the specialized knowledge related to the intended research field and a submitted Summary of research to date and research plan (200 points)

Chemistry Applications and Life Science	<p>[1] Mathematics involving linear algebras, analysis, and differential equation</p> <p>[2] Basic chemistry I involving basic inorganic chemistry and basic analytical chemistry</p> <p>[3] Basic chemistry II involving basic physical chemistry and basic organic chemistry</p> <p>[4] Chemical engineering basics involving transport phenomena, mass/energy balances, and phase equilibrium</p> <p>4 questions in total (75 points each)</p>	Oral examination is conducted on the basic and specialized knowledge related to the examinee's previous research and/or intended research field (100 points)
Mathematical Sciences	<p>[1] Linear algebra (50 points)</p> <p>[2] Calculus (50 points)</p> <p>[3] Set Theory (50 points)</p> <p>[4] Topology (50 points)</p>	<p>[1] Algebra (50 points)</p> <p>[2] Geometry (50 points)</p> <p>[3] Analysis (50 points)</p> <p>[4] Probability and statistics (50 points)</p>
Physics	Mathematics (questions are asked from linear algebra, analysis and differential equation) (200 points)	Physics (questions are asked from dynamics, electromagnetism, quantum mechanics and thermal and statistical dynamics) (200 points)
Electrical and Computer Engineering	<p>[1] Linear algebras (100 points)</p> <p>[2] Calculus (100 points)</p>	<p>[1] Electromagnetics (50 points)</p> <p>[2] Circuit theory (50 points)</p> <p>[3] Logic circuit (50 points)</p> <p>[4] Algorithm (50 points)</p>

(3) General Admission: Instructions for examination on academic subjects

Unit	Instruction
Mechanical Engineering	None
Materials Science Frontier	None
Systems Design for Ocean-Space	None
Advanced Chemistry	Alpha calculators without programming functions may be used.
Chemistry Applications and Life Science	Alpha calculators without programming functions may be used.
Mathematical Sciences	None
Physics	None
Electrical and Computer Engineering	None

(4) The Mathematical Sciences Unit's Original Examination (English)

General Selection applicants who wish to apply to the Mathematical Sciences Unit are exempted from submitting TOEIC or TOEFL score certificates if they take the original examination (English) administered by the Mathematical Sciences Unit. Applicants who wish to take the original examination (English) must notify the Mathematical Sciences Unit during the examination on Subject I that they wish to take the original examination (English) without submitting TOEIC or TOEFL score certificates. Applicants who have submitted TOEIC or TOEFL score certificates at the time

of Special Admission **cannot** take the original examination (English).

The original examination (English) consists of a written test on reading and writing skills in English in the field of mathematics.

Applicants for the Mathematical Sciences Unit who do not submit TOEIC or TOEFL score certificates and are absent from the original examination (English) will not be considered as successful applicants.

9. TOEIC and TOEFL scores

The score certificates from the following tests are reviewed in the examination.

Examined test	Score certificate to be submitted	Official website
TOEIC Listening & Reading Test (public test)	Official Score Certificate	TOEIC(https://www.iibc-global.org/english/toEIC/test/lr.html)
TOEFL-iBT (Including Home Edition and Paper Edition)	Test Taker Score Report / Examinee Score Report	TOEFL (https://www.ets.org/toefl/)

***1 Performance in TOEIC Bridge, TOEIC Speaking & Writing Test, TOEFL-PBT or institutional testing programs such as TOEIC IP and TOEFL ITP is not acknowledged.**

***2 For TOEIC Listening & Reading Test (public test), the Digital Official Score Certificate with QR codes are also accepted. In this case, please submit a printout of your TOEIC the Digital Official Score Certificate. We verify their authenticity using the QR code displayed on the Digital Official Score Certificate.**

***3 Score certificates from TOEFL need to be submitted on the date of the examination. Our university does not accept any score certificates sent directly from ETS.**

- Submit a score certificate from TOEIC or TOEFL **on the day of your examination (Original only, no copies are accepted except in the case of *2 above. The same rule applies elsewhere.)**. Score certificates are collected during the oral examination for Special Admission, or during the examination on Subject I for General Admission. (Applicants to the Mathematical Sciences Unit must refer to 8 (4) "The Mathematical Sciences Unit's Original Examination (English)").
- Submit an original score certificate from a test taken **in the last two years** counting from the date of submission and must include a photograph of the applicant.. (However, for the entrance examinations listed in this Guideline, score certificates submitted within two years of the last day of the application period are also valid.) Applicants who submit invalid score certificates or fail to submit certificates at the designated time during the examination **will not be admitted**, except for those who are exempted from submitting score certificates.
- **【About TOEFL score】** Graduate School of Engineering Science does not recognize “My Best Scores” written on “Test Taker Score Report” .
- TOEIC and TOEFL scores are converted according to the following tables into a scale of 100 points and are counted as the examination on foreign language (English).

[Conversion method for TOEIC scores]

TOEIC	Conversion method	Foreign language (English)
-------	-------------------	----------------------------

349 points or less	0	0 points
350–500 points	(TOEIC – 350) / 3	0–50 points
500–800 points	(TOEIC – 500) / 6 + 50	50–100 points
801 points or more		100 points

[Conversion method for TOEFL-iBT]

TOEFL-iBT	Foreign language (English)	TOEFL-iBT	Foreign language (English)	TOEFL-iBT	Foreign language (English)	TOEFL-iBT	Foreign language (English)	TOEFL-iBT	Foreign language (English)
~90	100	76	84	63~62	66	51	47	41	18
89	99	75~74	82	61	64	50~49	43	40	15
88	98	73~72	80	60~59	63	48	40	39	12
87~86	96	71	78	58	61	47	38	38	7
85~84	95	70~69	75	57	59	46	34	37~36	2
83	92	68	74	56	56	45	31	35~	0
82~81	90	67~66	73	55~54	55	44	28		
80~79	88	65	71	53	53	43	24		
78~77	87	64	68	52	51	42	21		

- Scores are rounded to the nearest whole number.
- Submitted score certificates will not be returned to applicants.

10. Announcement of successful applicants

Thursday, September 5, 2024 around 4:00 p.m.

Acceptance letters are sent to successful applicants by post. In addition, registration numbers of successful applicants are posted on the website of the Graduate School of Engineering Science.

(<https://www.fse.ynu.ac.jp/index.html>)

[Note 1] The acceptance letter is the sole document entailing our official acceptance.

[Note 2] We do not respond to any inquiries regarding the outcome of the examination via phone calls and so forth.

[Note 3] Additional applicants may be accepted to fill in any vacancies. Relevant notification is delivered by post to such applicants. We do not answer any questions regarding additional admission for filling vacancies.

[Note 4] Successful applicants from the first stage are also announced for applicants claiming eligibility (8). Letters of acceptance will be sent by post on **Monday, March 3, 2025** to successful applicants after the final stage of screening.

11. Required payments for admission

[not charged to Japanese government-financed (MEXT) international students]

Admission fee 282,000 yen (current amount)

[Note 1] Payment should be made during the admission period (**Friday, September 6 – Thursday September 12, 2024 (for admission in October 2024) and Wednesday, March 5 – Monday, March 10, 2025 (for admission in April 2025)**). Necessary documents for the admission procedure are sent around mid-September 2024 (for admission in October 2024) and mid-February 2025 (for admission in April 2025).

Applicants who do not complete the necessary procedures during the admission period will be considered to have withdrawn from admission.

[Note 2] The amount of the admission fee and tuition (Annual tuition→535,800 yen) are subject to change.

[Note 3] Any change in the amount of tuition while a student is enrolled will take effect from the moment the change is introduced.

12. Prior consultation by applicants who need special consideration for their examination or studies

Prior to application, any applicants with physical or mental disabilities who require special consideration for their examination or studies must declare that fact to the Graduate School of Engineering Science Section using the form below.

Applicants who experienced accidents or unexpected trouble must also immediately declare any need for special consideration for their examination or studies.

Please contact us if you are not sure what classification applies to your situation.

[How to apply]

- (1) Prepare your application by following the example below and attach a copy of a medical certificate or physical disability certificate, and another supporting document.
- (2) Consult with us as early as possible before filing your application as it may take time for us to make accommodations for your request depending on its nature.
- (3) Place of submission and inquiry
Graduate School of Engineering Science Section, Yokohama National University
79-5 Tokiwadai, Hodogaya-ku, Yokohama, 240-8501 JAPAN
Phone: +81-45-339-3817

(Form) A4 vertical

Att.: Yokohama National University

Date (YYYY/MM/DD):

Name in *katakana*:

Name:

Date of birth:

Address:

Phone:

I hereby request consultation regarding my impairment before applying for admission to Yokohama National University.

1. Intended specialization, unit, department, and school
2. Type and degree of physical impairment
3. Requested special consideration for taking the examination
4. Requested special consideration for studies after enrollment
5. Special consideration made by the school where the applicant was enrolled
6. Other
(Attachment) Copy of medical certificate or physical disability certificate, and another supporting document

13. Reminders

- (1) Inadequately prepared application documents may be rejected.
- (2) No changes may be introduced to documents already submitted for the application procedure.
- (3) Application documents are not returned.
- (4) Entrance application fees are not refundable except in the following circumstances.
Contact the Graduate School of Engineering Science Section to find out how to ask for a refund.
 - A. An application was not filed after payment of the entrance application fee (application documents were not submitted or accepted).
 - B. Payment of the entrance application fee was made twice by mistake.

* Refunds are made after deduction of processing fees.
- (5) Enrollment may be cancelled even after admission if false statements on application documents come to light.
- (6) Please use the Joyo Kanji characters as much as possible. If you use non-Joyo Kanji characters, the computer may not be able to recognize your name. In such cases, the name may be replaced by a different Kanji character from the one registered on the application form on the acceptance notification and the admission letter.
- (7) Depending on your performance in the entrance examination, you may not be assigned to your desired specialization, educational program or supervisor. Consider your other choice.
- (8) Diplomas and transcripts submitted by applicants may be examined by a certification organization specified by YNU at the applicants' expense when YNU deems it necessary to have a third party authenticate them.
- (9) Applicants admitted to our graduate school by claiming Eligibility (8) will be deemed (in their school register) to have withdrawn from their undergraduate study. Beware that some national examinations and other certification examinations require graduation from undergraduate studies, which fact leads to disqualification of the abovementioned persons from such examinations.

Nevertheless, bachelor's degrees can be awarded after enrolling in our graduate school if successful applicants apply to the National Institution for Academic Degrees and Quality Enhancement of Higher Education, then pass the review and examinations.

- (10) In order to obtain the status of residence as "student," international students must have sufficient financial resources to sustain their life on campus.
- (11) Any changes related to the entrance examination will be notified to applicants along with announcements on the website of the Graduate School of Engineering Science.
- (12) Always carry your admission ticket for examination on the day of examination.
- (13) Applicants are not admitted if they fail to take the assigned examinations on Subject I or II, the oral examination, or the interview for screening, or if they fail to submit valid TOEIC or TOEFL score certificates. (Applicants to the Mathematical Sciences Unit must refer to 8 (4) "The Mathematical Sciences Unit's Original Examination (English)").
- (14) Switch off your mobile phones and other devices and put them in your bag before entering your examination room.
- (15) The following acts are considered as fraudulent. In case of misconduct, the exam would be immediately terminated, and he/she would be expelled from the exam hall. No further exams will be permitted. In addition, the result of exams that have already been taken will be invalidated.
 - ① Cheating. Furthermore, helping other examinees cheat by providing the assistance.
 - ② Opening the question booklet and beginning to answer before the start of the exam. Furthermore, holding a pencil or continuing to answer questions without following the instructions to end the exam.
 - ③ Taking the question booklet and answer sheet out of the exam room during the exam.
 - ④ Using electronic devices such as mobile phones, smart phones, wearable terminals, tablet terminals, earphones, etc. and auxiliary tools such as rulers, dictionaries, etc. during the exam. *Excluding those for which use is permitted
- (16) The following acts may be considered as fraudulent. If fraudulent activity is recognized, the treatment is the same as (15) above.
 - ① Wearing or holding in the hand ,without storing in your bag, of electric devices such as mobile phones, smartphones, wearable devices, tablets, earphones, and other electronic devices, rulers, dictionaries, and other aids during the exam. *Excluding those for which use is permitted
 - ② Doing the conduct that disturbs other examinees in the exam hall, exam room, or waiting room.
 - ③ Not following the instructions of supervisors, etc. in the exam hall, exam room, or waiting room.
 - ④ Doing any other conduct that may impair the fairness of the exam.
- (17) Employees of public offices or companies need to obtain written approval of enrollment (free form) from their directors or representatives. Prepare such documents in advance of the enrollment procedures.
- (18) The admission fee is not refunded after the enrollment procedure under any circumstances.
- (19) Many students admitted to our graduate school make use of economic assistance programs, such as admission fee (excluding international students) and tuition waivers, and scholarship programs.

II. Admission Guidelines for Special Screening of Professionals

1. Purpose

The Graduate School of Engineering Science is open to society and provides refresher courses and continuous training for professional engineers to deepen collaboration between universities and industries. Our school strives in this way to contribute to the development of new studies and technologies. True to this purpose, special screenings have been put in place to facilitate professional engineers to pursue even more advanced studies. A special exception is made for their graduate studies under Article 14 of the Standards for Establishment of Graduate Schools.

2. Number of students admitted

[Admission in October 2024]

Japanese students and Private expense international students

Department	Unit*	Specialization	Educational program	Number of students admitted
Chemistry and Life Science	Advanced Chemistry	Chemistry	PSD	A few
		Applied Chemistry		
		Energy and Sustainable Chemistry	TED	
	Chemistry Applications and Life Science	Chemistry Applications and Life Science	TED or PED	
		Energy and Sustainable Chemistry	TED	

[Admission in April 2025]

Department	Unit*	Specialization	Educational program	Number of students admitted
Mechanical Engineering, Materials Science, and Ocean Engineering	Mechanical Engineering	Mechanical Engineering	TED or PED	A few
		Aerospace Engineering		
		Process Integration		
	Materials Science Frontier	Materials Science Frontier	TED or PED	
		Aerospace Engineering		
		Process Integration		
	Systems Design for Ocean-Space	Systems Design for Ocean-Space	TED or PED	
		Aerospace Engineering		
	Chemistry and Life Science	Advanced Chemistry	Chemistry	
Applied Chemistry			TED	
Energy and Sustainable Chemistry				
Chemistry Applications and Life Science		Chemistry Applications and Life Science	TED or PED	
		Energy and Sustainable Chemistry	TED	
Mathematics, Physics, Electrical Engineering and Computer Science	Mathematical Sciences	Mathematical Sciences	SD	A few
	Physics	Physics	PSD	
	Electrical and Computer Engineering	Information Systems	TED or PED	
		Electrical and Computer Engineering		
		Integrated Electronics		

* Units are categories for conducting entrance examinations. Admitted students are assigned to one of the above specializations.

3. Eligibility

Professional engineers who have worked for more than one year in the same company or entity as a regular employee prior to enrolling in our graduate school, or those who retain their position in their company or entity, are recommended by their supervisors for their excellent professional achievements, and satisfy the following three conditions:

- (1) The applicant holds a bachelor's degree
- (2) During their undergraduate study, the applicant specialized in an area related to the intended graduate study specialization
- (3) At an employer, the applicant gained at least one year of professional experience related to the intended specialization for the graduate study

[Note 1] Under no circumstances will eligibility be acknowledged for applicants who do not satisfy the above requirements.

[Note 2] The eligibility of each professional applying for the special admission is assessed before the special screening. Consult with faculty members of your desired field of study and submit the following documents (enclosed in any envelope) to the Graduate School of Engineering Science Section **between Monday, May 13 and Wednesday, May 15, 2024**. Applications are accepted both via postal mail or directly at the section office provided that they are delivered by the deadline.

(The section office is open from 9:00 a.m. to 5:00 p.m., except for the hours between 12:45 p.m. and 1:45 p.m.)

Necessary designated forms should be downloaded from the Graduate School's website.

[1] Detailed statement of application documents (Annex 1)

[2] Application for certificate of eligibility (Form 11)

[3] Eligibility Accreditation Record (Form 13)

[4] Diploma from the most recently completed educational level

[5] One of the following sets of documents depending on the eligibility:

a. Professionals in service: Approval of examination and recommendation letter prepared by the supervisor or equivalent at the employer

b. Persons with relevant working experience: Certificate of research or professional assignments

[6] Record of Research Achievements (Form 16)

[7] (Desired) Research Plan (Form 17)

[8] An addressed return envelope (Size-L3) with 354 yen worth of stamps for express mail

The eligibility assessment is conducted by the Graduate School of Engineering Science, Yokohama National University. The result is delivered by post on **Monday, May 27, 2024**. If your eligibility is recognized, proceed by applying within the specified period. If you have any questions regarding eligibility for application, contact the Graduate School of Engineering Science Section.

4. Application procedure

After applying online, enclose the application documents (Please see below 5) in a Size-2 envelope (24 cm × 33.2 cm). Download the label for filing an application (Form 30) from YNU Web Application System. Attached the filled-out label to the envelope and send it via registered mail from the post office window.

4-1. Online Application

The online application form must be completed during the period **between Friday, May 24 and Tuesday, June 4, 2024.**

YNU Web Application System URL: <https://e-apply.jp/e/ynu/>

[Note]

- 1) Please note that an error message will show if there is no transmission for 60 minutes.
- 2) To temporarily suspend the input work in the Web application system, click "Save temporarily" Please log out. After re-logging in, input can be resumed. Other methods Input operation will be canceled if you interrupt the input work with.
- 3) If you have any questions about YNU Web Application System, please contact the following.

Career-tasu, Inc. Learning and Education Application Service Support Center

TEL : 0120-202079 (Reception time : from Monday to Friday, 10:00 – 18:00)

Email : cvs-web@career-tasu.co.jp

Only filling out the online application is not enough to successfully complete the application procedure. Send all the application forms printed out and other required materials by post. Please see below 4-2 to 5.

4-2. Application by post

Submit your application documents by registered mail **between Friday, May 31 and Thursday, June 6, 2024.**

Applications are only accepted by registered mail and only during the application period. No direct applications are accepted, nor is application by email.

Send your application as early as possible keeping in mind the time required for delivery by the postal service lest it reach us after the deadline and be rejected. As an exception, an application sent by **registered express mail that is postmarked by the originating post office by Wednesday, June 5, 2024** will be accepted even if it reaches us after the deadline.

[Note 1] Some post offices do not provide postal services on Saturdays, Sundays, and holidays. Make sure to check the schedule of your local post office.

[Note 2] Applicant who lives in abroad should send application documents by post through representative who lives in Japan. In the case of sending documents from abroad as needed, please send by recorded mail such as EMS (Express Mail Service) to reach us no later than **June 6, 2024.** 【by due date without fail】 However, return address is only in Japan.

[Note 3] We accept the application documents at the reception counter only through academic supervisor who gave provisional acceptance letter to applicant who lives in abroad.

4-3. Address for filing an application

Graduate School of Engineering Science Section

Yokohama National University

5. Application procedure

Necessary designated forms should be downloaded from YNU Web Application System and the Graduate School's website. Be sure to print them only on **one side** of **white A4-sized paper**.

Application documents	Note	Form number
Detailed statement of application documents	<u>Print out the form after downloading it from the Graduate School's website.</u> Enclose the application documents in the order listed in this form.	Attachment 2 *G
Application for admission	<u>Print out the form through YNU Web Application System after filling in all the required information (your name, address, phone#, educational history, Preferred Department, Unit, Specialization, Program, Academic supervisor, etc.)</u> Attach one 4-cm by 3-cm upper body shot taken in the last 3 months on a solid-color background without any headwear to your application. [Note] Please attach the same photo as the photo attached to the Application for admission on the printed Admission ticket (Please see below 6).	1-1 *Y
Diploma	To be prepared by the president or dean of the school where the applicant was or is enrolled. - If a copy of a diploma is used as a substitute, the original must be presented for verification at the Graduate School of Engineering Science Section. - International students are required to submit the certificate of degree or a document stating a degree (except for applicants claiming Eligibility 1). - Any certificate written in a language other than Japanese or English must be accompanied by a Japanese or English translation.	
Transcript	To be prepared by the president or dean of the school where the applicant was or is enrolled. Any certificate written in a language other than Japanese or English must be accompanied by a Japanese or English translation.	
Certificate of resident status	Foreign residents of Japan are requested to submit copies of both sides of their resident cards. Other foreigners are requested to submit copies of their passports.	
Curriculum Vitae of international student (only international students)	<u>Print out the form through YNU Web Application System after filling in all the required information.</u> (excluding applicants claiming Eligibility 1).	19-1 *Y
Provisional Acceptance Letter (only international students)	<u>Print out the form after downloading it from the Graduate School's website.</u> The submitted letter needs to be signed by your prospective supervisor. The signature does not necessarily have to be a handwritten original.	19-2 *G

Entrance application fee	<p>Amount: 30,000 yen Payment period: Make the payment by <u>Tuesday, June 4, 2024</u> Payment method According to payment guide of YNU Web Application system, please pay the application fee. For details of payment method, please see below. YNU Web Application system → introduction→ Application Fee</p> <p>(1) Applicants living in Japan [Payment at a convenience store] (Payments can only be made through Seven Eleven, Lawson, Ministop, FamilyMart, and Circle K Sunkus.) Make a payment using an information terminal in a store. (Payments cannot be made from an ATM. Make the payment at a cash register.)</p> <p>(2) Applicants living outside Japan Payments can be made by credit card (VISA, MasterCard, JCB, American Express, MUFG, DC, UFJ, and NICOS) and online with China UnionPay.</p> <p>[Note 1] Applications will not be accepted without payment of the entrance application fee.</p> <p>[Note 2] All charges involved are to be covered by the applicants. * Waiver of entrance application fee for affected people in the area subject to the Disaster Relief Act and the like YNU waives the entrance application fee for applicants affected by disasters to ensure they have the opportunity to seek admission. For more details, please visit our website (https://www.ynu.ac.jp/exam/index.html).</p>	
--------------------------	--	--

***G The Graduate School's website**

***Y YNU Web Application System**

[Note] Exemption from submission of certain documents

Documents that have already been submitted for the application for certificate of eligibility do not need to be submitted again.

6. Admission ticket for examination

We inform you by e-mail that we have officially accepted the application by **Wednesday, June 19, 2024**. In accordance with the notes stated in the e-mail, please login to YNU Web Application System and print out the Admission ticket for examination. Please attach the same photo as the photo attached to the Application for admission on the printed Admission ticket and bring it on the examination day. You **must not** write anything on both the front and the back of your admission ticket.

7. Screening and examination

Successful applicants are determined after interviews to assess their capacity and motivation to conduct research at our graduate school by taking into account their earlier specialization, nature of research, achievements in research, intended research, and performance in oral examinations in terms of aptitude to our educational programs. No applicants who miss interviews will be admitted. Ask your prospective supervisor for any instructions for undergoing an interview.

8. Interview schedule and venue

(1) Interview

Date	Examination method	Time
Wednesday, August 21 to Thursday, August 22	Interview	Due instruction is given when rooms for interviews are assigned (see 8(2))

- Examinees must enter their assigned rooms 20 minutes prior to their interviews.

(2) Interview venue

- Interviews are conducted on the YNU Campus (Tokiwadai, Hodogaya-ku, Yokohama).
Interviews are selectable “face-to-face on the campus” or “Online”.
YNU decide which to choose in line with applicants wishes.
Room assignment will be posted on YNU Web Application System **by Friday, August 2, 2024**.

9. Announcement of successful applicants

Thursday, September 5, 2024 around 4:00 p.m.

Acceptance letters are sent to successful applicants. In addition, registration numbers of successful applicants are posted on the website of the Graduate School of Engineering Science

(URL: <https://www.fse.ynu.ac.jp/index.html>).

[Note 1] The acceptance letter is the sole document entailing our official acceptance.

[Note 2] We do not respond to any inquiries regarding the outcome of the examination via phone calls and so forth.

[Note 3] Additional applicants may be accepted to fill in any vacancies. Relevant notification is delivered by post to such applicants. We do not answer any questions regarding additional admission for filling vacancies.

10. Required payments for admission

[not charged to Japanese government-financed (MEXT) international students]

Admission fee 282,000 yen (current amount)

[Note 1] Payment should be made during the admission period **(Friday, September 6 – Thursday September 12, 2024 (for admission in October 2024) and Wednesday, March 5 – Monday, March 10, 2025 (for admission in April 2025))**. Necessary documents for the admission

procedure are sent around mid-September 2024 (for admission in October 2024) and mid-February 2025 (for admission in April 2025).

Applicants who do not complete the necessary procedures during the admission period will be considered to have withdrawn from admission.

[Note 2] The amount of the admission fee and tuition (Annual tuition→535,800 yen) are subject to change.

[Note 3] Any change in the amount of tuition while a student is enrolled will take effect from the moment the change is introduced.

11. Prior consultation by applicants who need special consideration for their examination or studies

Prior to application, any applicants with physical or mental disabilities who require special consideration for their examination or studies must declare that fact to the Graduate School of Engineering Science Section using the form below. Applicants who experienced accidents or unexpected trouble must also immediately declare any need for special consideration for their examination or studies.

Please contact us if you are not sure what classification applies to your situation.

[How to apply]

- (1) Prepare your application by following the example below and attach a copy of a medical certificate or physical disability certificate, and another supporting document.
- (2) Consult with us as early as possible before filing your application as it may take time for us to make accommodations for your request depending on its nature.
- (3) Place of submission and inquiry
Graduate School of Engineering Science Section, Yokohama National University
79-5 Tokiwadai, Hodogaya-ku, Yokohama, 240-8501 JAPAN
Phone: +81-45-339-3817

(Form) A4 vertical

Date (YYYY/MM/DD):

Att.: Yokohama National University

Name in *katakana*:

Name:

Date of birth:

Address:

Phone:

I hereby request consultation regarding my impairment before applying for admission to
Yokohama National University.

1. Intended specialization, unit, department, and school
2. Type and degree of physical impairment
3. Requested special consideration for taking the examination
4. Requested special consideration for studies after enrollment
5. Special consideration made by the school where the applicant was enrolled
6. Other

(Attachment) Copy of medical certificate or physical disability certificate, and another supporting document

12. Reminders

- (1) Inadequately prepared application documents may be rejected.
- (2) No changes may be introduced to documents already submitted for the application procedure.
- (3) Application documents are not returned.
- (4) Entrance application fees are not refundable except in the following circumstances.
Contact the Graduate School of Engineering Science Section to find out how to ask for a refund.
 - A. An application was not filed after payment of the entrance application fee (application documents were not submitted or accepted).
 - B. Payment of the entrance application fee was made twice by mistake.* Refunds are made after deduction of processing fees.
- (5) Enrollment may be cancelled even after admission if false statements on application documents come to light.
- (6) Please use the Joyo Kanji characters as much as possible. If you use non-Joyo Kanji characters, the computer may not be able to recognize your name. In such cases, the name may be replaced by a different Kanji character from the one registered on the application form on the acceptance notification and the admission letter.
- (7) Depending on your performance in the entrance examination, you may not be assigned to your desired specialization, educational program or supervisor. Consider your other choice.
- (8) Diplomas and transcripts submitted by applicants may be examined by a certification organization specified by YNU at the applicants' expense when YNU deems it necessary to have a third party authenticate them.
- (9) Any changes related to the entrance examination will be notified to applicants along with announcements on the website of the Graduate School of Engineering Science.
- (10) Always carry your admission ticket for examination on the day of examination.
- (11) Applicants who miss their interviews will not be admitted.
- (12) Switch off your mobile phones and other devices and put them in your bag before entering your examination room.
- (13) Employees of public offices or companies need to obtain written approval of enrollment (free form) from their directors or representatives. Prepare such documents in advance of the enrollment procedures.
- (14) The admission fee is not refunded after the enrollment procedure under any circumstances.
- (15) Many students admitted to the Graduate School of Engineering make use of economic assistance programs, such as admission fee (excluding international students) and tuition waivers, and scholarship programs.

III. Overview of Master's Programs

1. Purpose of Education and Research at our Graduate School

The Graduate School of Engineering Science at YNU aspire to serve as an international hub of practical science. The effort is led by the Graduate School of Engineering Science, which aims to foster globally competitive scientists and engineers who have sound ethics and enterprising spirits to learn beyond their areas of expertise. We hope to further strengthen and develop the manufacturing industry and other industries by nurturing people who are well versed in both science and engineering.

The master's programs at the Graduate School of Engineering Science offer specialized courses for students to develop their expertise and skills, as well as a wide range of classes in fundamental science designed to help them build a solid foundation, such as courses in mathematical science, school-wide core courses, and department-wide core courses. Students are encouraged to take initiative in their research in order to develop original technologies and acquire new knowledge. In this process, they grow into sophisticated and professional engineers and researchers who can make comprehensive judgments flexibly and respond to unknown problems based on their broad perspectives.

2. Description of Departments and Profile of Graduates

2.1 Department of Mechanical Engineering, Materials Science, and Ocean Engineering

Mechanical engineering, material engineering, naval architecture and ocean engineering, and aerospace engineering all seek to build advanced systems and highly functional materials by combining elementary technologies while incorporating basic principles. This department helps students understand these basic principles, develop their scientific intuition in applying those principles, and cultivate the ability to adapt to technical innovation in this globalized world. The learning and research activities in the department seek to build advanced systems and create highly functional materials by bringing together elementary technologies, designing technologies to make the most of elements, and creating production technologies that maintain the balance between our society and the environment. In this manner, our department produces globally-competitive engineers and researchers with practical and sophisticated skills.

2.1.1 Specializations

The Department of Mechanical Engineering, Materials Science, and Ocean Engineering covers the following five specializations. The awarded degree and offered programs are listed next to each specialization.

- Mechanical Engineering: Master (Engineering), T-type Engineering Degree (TED) Program, or Pi-type Engineering Degree (PED) Program
- Materials Science Frontier: Master (Engineering), T-type Engineering Degree (TED) Program, or Pi-

type Engineering Degree (PED) Program

- Systems Design for Ocean-Space: Master (Engineering), T-type Engineering Degree (TED) Program, or Pi-type Engineering Degree (PED) Program
- Aerospace Engineering: Master (Engineering), T-type Engineering Degree (TED) Program, or Pi-type Engineering Degree (PED) Program
- Process Integration: Master (Engineering), T-type Engineering Degree (TED) Program, or Pi-type Engineering Degree (PED) Program

2.1.2 Education Programs

Two different types of education programs are offered at the Department of Mechanical Engineering, Materials Science, and Ocean Engineering to obtain degrees in the specializations listed in the previous section.

- **T-type Engineering Degree (TED) Program (in Mechanical Engineering, Materials Science Frontier, Systems Design for Ocean-Space, Aerospace Engineering, and Process Integration)**

The TED program in Mechanical Engineering welcomes students with basic skills in mechanical engineering who seek to gain advanced skills and expertise in building advanced machines and mechanical systems. The program in Materials Science Frontier welcomes students with basic skills in material engineering and science who seek to learn advanced technologies related to material mechanics and processing, material strength and structure, material function and composition, and material physics and chemistry. The program in Systems Design for Ocean-Space welcomes students with basic skills in naval architecture and ocean engineering who are keen to apply advanced technologies for using marine space and for combining basic technologies. These programs also recruit students who seek to learn aerospace engineering technologies for using the atmosphere and space and Integrated process engineering for semiconductor back-end processing, fabrication, molding, evaluation and analysis, based on their basic knowledge on mechanical, material, and naval architecture and ocean engineering.

- **Pi-type Engineering Degree (PED) Program (in Mechanical Engineering, Materials Science Frontier, Systems Design for Ocean-Space, Aerospace Engineering, and Process Integration)**

The PED program in Mechanical Engineering welcomes students with basic skills in mechanical engineering who seek to gain practical skills to work globally while addressing issues involving mechanical engineering. The program in Materials Science Frontier welcomes students with basic skills in material engineering and science who seek to learn practical technologies involving material mechanics and processing, material strength and structure, material function and composition, and material physics and chemistry. The program in Systems Design for Ocean-Space welcomes students with basic skills in naval architecture and ocean engineering who are keen to engage in practical and technical challenges involved in the planning, construction, and operation of devices for using marine space. These programs also recruit students who seek to work with practical challenges involving aerospace engineering for using the atmosphere and space and Integrated process engineering for semiconductor back-end processing, fabrication, molding, evaluation and analysis, based on their basic knowledge on mechanical, material,

and naval architecture and ocean engineering.

2.2 Department of Chemistry and Life Science

Today's material civilization is built upon comprehensive and advanced science technologies for developing and applying functional materials based on unique natural science. The important keys for the sustainable development of civilization include the pursuit of exceptional substances and materials, the construction of good production systems, and the understanding and application of life phenomena. To achieve this, a comprehensive system must be built beyond the conventional academic framework of chemistry to incorporate mathematics and information science. This department focuses on chemistry and life science and produces internationally-minded professionals who can adapt to evolving science technologies with their basic competency and comprehensive skills to address a wide range of issues involving nature research, manufacturing, energy, and life forms by applying principles and their knowledge.

2.2.1 Specializations

The Department of Chemistry and Life Science covers the following four specializations. The awarded degree and offered programs are listed next to each specialization.

- Chemistry: Master (Science), Professional Science Degree (PSD) Program
- Applied Chemistry: Master (Engineering), T-type Engineering Degree (TED) Program
- Energy and Sustainable Chemistry: Master (Engineering), T-type Engineering Degree (TED) Program
- Chemistry Applications and Life Science: Master (Engineering), T-type Engineering Degree (TED) Program, or Pi-type Engineering Degree (PED) Program

2.2.2 Education Programs

Three different types of education programs are offered at the Department of Chemistry and Life Science to obtain degrees in the specializations listed in the previous section.

- **T-type Engineering Degree (TED) Program (in Applied Chemistry, Energy and Sustainable Chemistry, and Chemistry Applications and Life Science)**

The program requires basic knowledge in inorganic chemistry, analytical chemistry, physical chemistry, organic chemistry, and other essential fields related to materials, as well as in material engineering, energy chemistry, catalytic chemistry, polymer chemistry, biochemistry, chemical engineering, bioengineering, and so forth. Students are encouraged to delve deep into their own research questions to search for molecules and materials that produce new functions; build necessary production systems for such materials; create new materials and construct processes that facilitate energy conversion and use; and unravel and apply life phenomena. Students are taught to develop basic research and development skills to flexibly respond to unknown problems by making comprehensive judgments based on their broad perspectives. This program produces professionals with basic skills in chemistry, energy chemistry, and

bio and life science who can pay attention to other research areas beyond their field and adapt to evolving science technologies.

- **Pi-type Engineering Degree (PED) Program (Chemistry Applications and Life Science)**

The program consolidates basic knowledge in inorganic chemistry, analytical chemistry, physical chemistry, organic chemistry, and other essential fields related to materials, as well as in material engineering, chemical engineering, bioengineering, biochemistry, and so forth. The main emphasis is placed on the development of basic skills for pursuing exceptional substances and materials, designing production systems and devices, and integrating their basic knowledge to establish practical technologies to unravel and apply life phenomena. This program covers chemical engineering, energy chemistry, material engineering, bio and life science, and other related areas. It produces globally competitive professionals with practical skills who can adapt to evolving science technologies while exercising their basic skills to apply principles and available information in an integrated manner and respond to a wide range of challenges involving manufacturing, energy, and life forms.

- **Professional Science Degree (PSD) Program (Chemistry)**

In this program, students study designing principles and synthetic methods of molecules and materials and learn about chemical phenomena and properties in order to develop basic skills for making scientific research in such fields of chemistry as inorganic chemistry, analytical chemistry, physical chemistry, organic chemistry, catalytic chemistry, polymer chemistry, electrochemistry, and biochemistry. The additional studies in organic and inorganic material engineering, catalytic engineering, bioengineering, and application of chemistry and life sciences to engineering are intended to build their engineering basics in chemistry. The integrated style of education produces professionals with solid basic skills who can conduct scientific research, as well as contribute to the development of crucial materials for the next generation based on an understanding of basic science in terms of physics and science-oriented chemical industries.

2.3 Department of Mathematics, Physics, Electrical Engineering and Computer Science

The innovation in information and communication technology that has utterly transformed our society owes its remarkable development to electrical, electronic, communication, and information engineering. Further paradigm shifts and innovation require integrated and interdisciplinary understanding in extensive fields from basic science in mathematics and physics to applied engineering. The master's program at the Department of Mathematics, Physics, Electrical Engineering and Computer Science produces globally-competitive, practical, and creative engineers and researchers by offering learning and research opportunities in a wide area including mathematical science, physics, applied physics, as well as electrical, electronic, communication, information, and medical information engineering.

2.3.1 Specializations

The Department of Mathematics, Physics, Electrical Engineering and Computer Science covers the

following five specializations. The awarded degree and offered programs are listed next to each specialization.

- Mathematical Sciences: Master (Science), Science Degree Program
- Physics: Master (Science), Professional Science Degree (PSD) Program
- Applied Physics: Master (Engineering), T-type Engineering Degree (TED) Program, or Pi-type Engineering Degree (PED) Program
- Information Systems: Master (Engineering), T-type Engineering Degree (TED) Program, or Pi-type Engineering Degree (PED) Program
- Electrical and Computer Engineering: Master (Engineering), T-type Engineering Degree (TED) Program, or Pi-type Engineering Degree (PED) Program
- Integrated Electronics: Master (Engineering), T-type Engineering Degree (TED) Program, or Pi-type Engineering Degree (PED) Program

2.3.2 Education Programs

- **T-type Engineering Degree (TED) Program (in Applied Physics, Information Systems, Electrical and Computer Engineering, and Integrated Electronics)**

The program welcomes students with the abovementioned basic academic background who want to develop their expertise further in order to become globally competitive engineers and researchers who can make comprehensive judgments flexibly and respond to unknown problems based on their broad perspectives.

- **Pi-type Engineering Degree (PED) Program (in Applied Physics, Information Systems, Electrical and Computer Engineering, and Integrated Electronics)**

The program welcomes students with the abovementioned basic academic background who aspire to become engineers and researchers who can respond practically to challenges faced by our diversified and advanced industrial society.

- **Professional Science Degree (PSD) Program and Science Degree Program (in Physics, and Mathematical Science)**

The program welcomes students who are able to apply their basic knowledge in physics and mathematical science; aspire to gain expertise in the field they choose and a broader understanding in related fields; and ultimately become globally competitive engineers and researchers.

IV. Specialization and research field of supervisors

April 2024 Revised

For details of each supervisors, refer to the website of the Graduate School of Engineering Science, Yokohama National University (<https://www.fse.ynu.ac.jp/english/index.html>)

Department	Unit	Name	Title	Specialization (M: Master's program) (D: Doctoral program)	Research Field	Type of Students Accepted	
						Doctoral	Master's
Mechanical Engineering, Materials Science, and Ocean Engineering	Mechanical Engineering	ARAKI Takuto	Professor	Mechanical Engineering(MD) and Energy Materials(D)	Thermo-fluid Dynamics, Mass and heat Transfer, Fuel Cells, Micro Electro Mechanical Systems	○	○
Mechanical Engineering, Materials Science, and Ocean Engineering	Mechanical Engineering	ISHII Kazuhiro	Professor	Mechanical Engineering(MD) and Aerospace Engineering(M)	Combustion Engineering, Chemical Propulsion	○	○
Mechanical Engineering, Materials Science, and Ocean Engineering	Mechanical Engineering	YU Qiang	Professor	Mechanical Engineering(MD) and Process Integration(M)	Computational Mechanics, Strength of Materials	○	○
Mechanical Engineering, Materials Science, and Ocean Engineering	Mechanical Engineering	OZAKI Shingo	Professor	Mechanical Engineering(MD) and Energy Materials(D)	Constitutive Equation, Plasticity, Friction, Self-healing materials, Terramechanics	○	○
Mechanical Engineering, Materials Science, and Ocean Engineering	Mechanical Engineering	SATO Yasukazu	Professor	Mechanical Engineering(MD)	Mechatronics, Electromechanical Systems, Fluid Power Control, Power Transmission	○	○
Mechanical Engineering, Materials Science, and Ocean Engineering	Mechanical Engineering	HYAKUTAKE Toru	Professor	Mechanical Engineering(MD)	Computational Fluid Dynamics, Biomechanics, Micro Nano Flow	○	○
Mechanical Engineering, Materials Science, and Ocean Engineering	Mechanical Engineering	MAEDA Yusuke	Professor	Mechanical Engineering(MD)	Robotics, Manufacturing systems engineering	○	○
Mechanical Engineering, Materials Science, and Ocean Engineering	Mechanical Engineering	MATSUI Jun	Professor	Mechanical Engineering(MD)	Internal Flow in Fluid Machinery , Computational Fluid Dynamics	○	○
Mechanical Engineering, Materials Science, and Ocean Engineering	Mechanical Engineering	MARUO Shoji	Professor	Mechanical Engineering(MD) and Process Integration(M)	Ultrahigh-precision 3D printing, Micromachine, Micro Total Analysis System	○	○
Mechanical Engineering, Materials Science, and Ocean Engineering	Mechanical Engineering	INOUE Fumihiko	Associate Prof.	Mechanical Engineering(M) and Process Integration(M)	Advanced Packaging and 3D Integration	—	○
Mechanical Engineering, Materials Science, and Ocean Engineering	Mechanical Engineering	OTA Hiroki	Associate Prof.	Mechanical Engineering(MD) and Process Integrartion(M)	Micro/Nano fabrication, Sensor engineering, Soft material	○	○
Mechanical Engineering, Materials Science, and Ocean Engineering	Mechanical Engineering	KATO Ryu	Associate Prof.	Mechanical Engineering(MD)	Robotics, Medical welfare machine, Rehabilitation engineering, Brain machine interface	○	○
Mechanical Engineering, Materials Science, and Ocean Engineering	Mechanical Engineering	KITAMURA Keiichi	Associate Prof.	Mechanical Engineering(MD) and Aerospace Engineering(M)	Aerodynamics, Computational Fluid Dynamics, Hypersonic Flow, Multiphase Flow	○	○
Mechanical Engineering, Materials Science, and Ocean Engineering	Mechanical Engineering	SAKAI Seigo	Associate Prof.	Mechanical Engineering(MD)	Heat Transfer, Numerical Simulation, Radiative Exchange	○	○
Mechanical Engineering, Materials Science, and Ocean Engineering	Mechanical Engineering	SHINOZUKA Jun	Associate Prof.	Mechanical Engineering(MD)	Cutting, FEM, Dynamic Behavior of Material	○	○
Mechanical Engineering, Materials Science, and Ocean Engineering	Mechanical Engineering	TAKAO Yoshinori	Associate Prof.	Mechanical Engineering(MD) and Aerospace Engineering(M)	Electric Propulsion, Plasma Application	○	○
Mechanical Engineering, Materials Science, and Ocean Engineering	Mechanical Engineering	FUJISAWA Kei	Associate Prof.	Mechanical Engineering(M)	Droplet impact, Erosion, Polishing, Modeling	—	○
Mechanical Engineering, Materials Science, and Ocean Engineering	Mechanical Engineering	FUCHIWAKI Ohmi	Associate Prof.	Mechanical Engineering(MD) and Process Integration(M)	Micro mechanism, Micro manipulation, Actuator, Precise mobile robot	○	○

Department	Unit	Name	Title	Specialization (M: Master's program) (D: Doctoral program)	Research Field	Type of Students Accepted	
						Doctoral	Master's
Mechanical Engineering, Materials Science, and Ocean Engineering	Mechanical Engineering	KUROSE Kizuku	Assistant Prof.	Mechanical Engineering(M)	Heat transfer engineering, Heat exchanger, Heat transport device, Phase change heat transfer	—	○
Mechanical Engineering, Materials Science, and Ocean Engineering	Materials Science Frontier	UMEZAWA Osamu	Professor	Materials Science Frontier(MD) and Energy Materials(D)	Physical Metallurgy, Microstructural Design and Control, Deformation and Fracture	○	○
Mechanical Engineering, Materials Science, and Ocean Engineering	Materials Science Frontier	NAKAO Wataru	Professor	Materials Science Frontier(MD) and Energy Materials(D)	Machine material/material mechanics, Inorganic material/physical properties, Structural/functional materials	○	○
Mechanical Engineering, Materials Science, and Ocean Engineering	Materials Science Frontier	HASEGAWA Makoto	Professor	Materials Science Frontier(MD) and Aerospace Engineering(M)	Strength of Materials, Fracture Mechanics, Microstructure Control, Composites, Coatings	○	○
Mechanical Engineering, Materials Science, and Ocean Engineering	Materials Science Frontier	HIROSAWA Shoichi	Professor	Materials Science Frontier(MD) and Energy Materials(D)	Structural Materials Design, Microstructural Control of Metals, Computational Materials Science	○	○
Mechanical Engineering, Materials Science, and Ocean Engineering	Materials Science Frontier	MUKAI Kohki	Professor	Materials Science Frontier(MD)	Semiconductor Nanostructures, Quantum Optical Material, Optoelectronics Materials, Microfabrication of Metals	○	○
Mechanical Engineering, Materials Science, and Ocean Engineering	Materials Science Frontier	OHTAKE Mitsuru	Associate Prof.	Materials Science Frontier(MD), Energy Materials(D), and Process Integration(M)	Nanomaterials, Crystal Growth, Magnetism	○	○
Mechanical Engineering, Materials Science, and Ocean Engineering	Materials Science Frontier	OONO-HORI Naoko	Associate Prof.	Materials Science Frontier(MD)	Reactor Structural Materials, Extreme Materials, Microstructure Analysis	○	○
Mechanical Engineering, Materials Science, and Ocean Engineering	Materials Science Frontier	NAKATSUGAWA Hiroshi	Associate Prof.	Materials Science Frontier(MD)	Functional Material Engineering, Solid State Physics, Thermoelectric Materials, First Principles Calculation	○	○
Mechanical Engineering, Materials Science, and Ocean Engineering	Materials Science Frontier	MAENO Tomoyoshi	Associate Prof.	Materials Science Frontier(MD)	Manufacturing Processes, Forming Processes	○	○
Mechanical Engineering, Materials Science, and Ocean Engineering	Materials Science Frontier	OSADA Toshio	Visiting Prof.	Energy Materials(D)	High Temperature Structural Materials, Microstructure of Materials, Strength of Materials, Fracture Mechanics	○	—
Mechanical Engineering, Materials Science, and Ocean Engineering	Systems Design for Ocean-Space	OKADA Tetsuo	Professor	Systems Design for Ocean-Space(MD)	Ship Structural Design, Structural Analysis	○	○
Mechanical Engineering, Materials Science, and Ocean Engineering	Systems Design for Ocean-Space	KAWAMURA Yasumi	Professor	Systems Design for Ocean-Space(MD)	Structural Mechanics, Computer Aided Engineering, Structural Reliability	○	○
Mechanical Engineering, Materials Science, and Ocean Engineering	Systems Design for Ocean-Space	NISHI Yoshiki	Professor	Systems Design for Ocean-Space(MD)	Marine Resource, Deepsea development, Seawater desalination	○	○
Mechanical Engineering, Materials Science, and Ocean Engineering	Systems Design for Ocean-Space	MIYAJI Koji	Professor	Systems Design for Ocean-Space(MD) and Aerospace Engineering(M)	High Speed Aerodynamics, Computational Fluid Dynamics, Aircraft Design	○	○
Mechanical Engineering, Materials Science, and Ocean Engineering	Systems Design for Ocean-Space	MURAI Motohiko	Professor	Systems Design for Ocean-Space(MD)	Design of Ocean Structures, Hydroelastic Responses of Huge Floating Structures, Hydrodynamics, Ocean Environmental Engineering, Ocean energy	○	○
Mechanical Engineering, Materials Science, and Ocean Engineering	Systems Design for Ocean-Space	TAKAGI Youhei	Associate Prof.	Systems Design for Ocean-Space(MD)	Computational Fluid Dynamics, Drag Reduction, Multiphase Flow	○	○
Mechanical Engineering, Materials Science, and Ocean Engineering	Systems Design for Ocean-Space	HIGUCHI Takehiro	Associate Prof.	Systems Design for Ocean-Space(MD) and Aerospace Engineering(M)	Attitude Control / Guidance and Control of Aerospace Vehicles, Aerospace Systems Design, Optimal Control, Unmanned Aerial Vehicles	○	○
Mechanical Engineering, Materials Science, and Ocean Engineering	Systems Design for Ocean-Space	HIRAKAWA Yoshiaki	Associate Prof.	Systems Design for Ocean-Space(MD)	Ship Motion, Ocean Wave, Experiments in Towing Tank and Actual Sea	○	○

Department	Unit	Name	Title	Specialization (M: Master's program) (D: Doctoral program)	Research Field	Type of Students Accepted	
						Doctoral	Master's
Mechanical Engineering, Materials Science, and Ocean Engineering	Systems Design for Ocean-Space	MITSUYUKI Taiga	Associate Prof.	Systems Design for Ocean-Space(MD)	Complex Systems Design, Systems Engineering	○	○
Mechanical Engineering, Materials Science, and Ocean Engineering	Systems Design for Ocean-Space	LI Qiao	Associate Prof.	Systems Design for Ocean-Space(M)	Motion Responses of Floating Structures, Marine Renewable Energy, Aquacultural Engineering	—	○
Chemistry and Life Science	Advanced Chemistry	ATOBE Mahito	Professor	Chemistry(MD), Applied Chemistry(D), and Energy and Sustainable Chemistry(M)	Organic Electrochemistry, Electrochemical Synthesis, Electrochemical Polymerization	○	○
Chemistry and Life Science	Advanced Chemistry	INAGAKI Satoshi	Professor	Chemistry(MD), Applied Chemistry(D), and Energy and Sustainable Chemistry(M)	Catalytic Chemistry, Zeolite Science, Environmentally Benign Synthesis of Fine Chemicals	○	○
Chemistry and Life Science	Advanced Chemistry	OYAMA Toshiyuki	Professor	Chemistry(MD) and Applied Chemistry(MD)	Polymer Synthesis, Functional Polymers, Photosensitive Polymers, Thermosetting resins	○	○
Chemistry and Life Science	Advanced Chemistry	KAWAMURA Izuru	Professor	Chemistry(MD) and Applied Chemistry(MD)	Structural Biology, Biophysical Chemistry, Biomacromolecules	○	○
Chemistry and Life Science	Advanced Chemistry	KUBOTA Yoshihiro	Professor	Chemistry(MD), Applied Chemistry(D), and Energy and Sustainable Chemistry(M)	Catalytic Chemistry, Zeolite Science, Environmentally Benign Synthesis of Fine Chemicals	○	○
Chemistry and Life Science	Advanced Chemistry	KOJIMA Chojiro	Professor	Chemistry(MD) and Applied Chemistry(MD)	Structural Biology, Structural Chemistry, Biological Chemistry, Chemical Biology, NMR	○	○
Chemistry and Life Science	Advanced Chemistry	DOKKO Kaoru	Professor	Chemistry(MD), Applied Chemistry(D), Energy and Sustainable Chemistry(M), and Energy Materials(D)	Electrochemistry, Materials Chemistry, Electrochemical Devices	○	○
Chemistry and Life Science	Advanced Chemistry	MOTOKURA Ken	Professor	Chemistry(MD), Applied Chemistry(D), Energy and Sustainable Chemistry(M), and Energy Materials(D)	Concerted Catalysis, Supported Catalyst, Chemical Conversion of CO ₂	○	○
Chemistry and Life Science	Advanced Chemistry	YABUUCHI Naoaki	Professor	Chemistry(MD), Applied Chemistry(D), Energy and Sustainable Chemistry(M), and Energy Materials(D)	Solid State Chemistry, Materials Chemistry	○	○
Chemistry and Life Science	Advanced Chemistry	YAMAGUCHI Yoshitaka	Professor	Chemistry(MD) and Applied Chemistry(MD)	Coordination Chemistry, Organometallic Chemistry, Molecular Catalysts	○	○
Chemistry and Life Science	Advanced Chemistry	ITO Suguru	Associate Prof.	Chemistry(MD) and Applied Chemistry(MD)	Organic Chemistry, Photochemistry, Supramolecular Chemistry	○	○
Chemistry and Life Science	Advanced Chemistry	UENO Kazuhide	Associate Prof.	Chemistry(MD), Applied Chemistry(D), Energy and Sustainable Chemistry(M), and Energy Materials(D)	Electrochemistry, Electrolyte materials	○	○
Chemistry and Life Science	Advanced Chemistry	UBUKATA Takashi	Associate Prof.	Chemistry(MD) and Applied Chemistry(MD)	Photo Functional Chemistry, Photochromism	○	○
Chemistry and Life Science	Advanced Chemistry	KIKUCHI Azusa	Associate Prof.	Chemistry(MD) and Applied Chemistry(MD)	Photophysics and Photochemistry, Singlet Oxygen, Photochromism, Organic UV Absorber	○	○
Chemistry and Life Science	Advanced Chemistry	GOTOH Hiroaki	Associate Prof.	Chemistry(MD) and Applied Chemistry(MD)	Organic Synthesis, Physical Organic Chemistry, Molecular Design	○	○
Chemistry and Life Science	Advanced Chemistry	SHIDA Naoki	Associate Prof.	Chemistry(M) and Energy and Sustainable Chemistry(M)	Organic Electrochemistry, Electrosynthesis, Electrocatalyst, Molecular catalyst	—	○
Chemistry and Life Science	Advanced Chemistry	TATARA Ryoichi	Associate Prof.	Chemistry(M) and Energy and Sustainable Chemistry(M)	Electrochemistry, Physical Chemistry, Materials Chemistry	—	○

Department	Unit	Name	Title	Specialization (M: Master's program) (D: Doctoral program)	Research Field	Type of Students Accepted	
						Doctoral	Master's
Chemistry and Life Science	Advanced Chemistry	SAKOMURA Masaru	Lecturer	Chemistry(MD) and Applied Chemistry(MD)	Physical Chemistry, Surface Science	○	○
Chemistry and Life Science	Advanced Chemistry	IDE Yusuke	Visiting Prof.	Energy Materials(D)	Mineral, Low-Dimensional Material, Catalysis, Photocatalysis, UV Shielding	○	—
Chemistry and Life Science	Advanced Chemistry	MANDAI Toshihiko	Visiting Associate Prof.	Energy Materials(D)	Electrochemistry, Solution chemistry, Structural chemistry, Organic synthesis	○	—
Chemistry and Life Science	Chemistry Applications and Life Science	OKAZAKI Shinji	Professor	Chemistry Applications and Life Science(M【PED only】 D), and Energy and Sustainable Chemistry(M)	Sensor Engineering, Corrosion Engineering, Continuing Engineering Education	○	○
Chemistry and Life Science	Chemistry Applications and Life Science	KANAI Toshimitsu	Professor	Chemistry Applications and Life Science(MD)	Optical Materials, Colloid Science, Microfluidics	○	○
Chemistry and Life Science	Chemistry Applications and Life Science	TAKAGAKI Atsushi	Professor	Chemistry Applications and Life Science(M【PED only】 D), Energy and Sustainable Chemistry(M) and Energy Materials(D)	Catalyst Chemistry, Heterogenous Catalyst, Inorganic Material Chemistry	○	○
Chemistry and Life Science	Chemistry Applications and Life Science	TAKAHASHI Koji	Professor	Chemistry Applications and Life Science(MD)	Strength of Materials, Materials Science and Engineering	○	○
Chemistry and Life Science	Chemistry Applications and Life Science	TAKEDA Minoru	Professor	Chemistry Applications and Life Science(MD)	Microorganisms, Enzymes, Glycoconjugates	○	○
Chemistry and Life Science	Chemistry Applications and Life Science	FUKUDA Junji	Professor	Chemistry Applications and Life Science(MD)	Tissue Engineering and Regenerative Medicine	○	○
Chemistry and Life Science	Chemistry Applications and Life Science	mitsushima Shigenori	Professor	Chemistry Applications and Life Science(M【PED only】 D), Energy and Sustainable Chemistry(M) and Energy Materials(D)	Applied Electrochemistry	○	○
Chemistry and Life Science	Chemistry Applications and Life Science	YOSHITAKE Hideaki	Professor	Chemistry Applications and Life Science(M【PED only】 D), and Energy and Sustainable Chemistry(M)	Environmental Physical Chemistry, Materials Chemistry	○	○
Chemistry and Life Science	Chemistry Applications and Life Science	IJIMA Kazutoshi	Associate Prof.	Chemistry Applications and Life Science(MD)	Biofunctional Chemistry, Biomedical Engineering, Biomaterials, Regenerative Medicine	○	○
Chemistry and Life Science	Chemistry Applications and Life Science	KURODA Yoshiyuki	Associate Prof.	Chemistry Applications and Life Science(M【PED only】 D), and Energy and Sustainable Chemistry(M)	Inorganic Synthetic Chemistry, Energy Materials	○	○
Chemistry and Life Science	Chemistry Applications and Life Science	SUZUKI Atsushi	Associate Prof.	Chemistry Applications and Life Science(MD)	Developmental Biology, Biochemistry, Mouse Genetics	○	○
Chemistry and Life Science	Chemistry Applications and Life Science	NAKAMURA Kazuho	Associate Prof.	Chemistry Applications and Life Science(MD)	Membrane separation, Separation engineering, Environmental chemical engineering	○	○
Chemistry and Life Science	Chemistry Applications and Life Science	NITTAMI Tadashi	Associate Prof.	Chemistry Applications and Life Science(MD)	Biochemical Engineering, Environmental Engineering, Microbiology	○	○
Chemistry and Life Science	Chemistry Applications and Life Science	MATSUZAWA Koichi	Associate Prof.	Chemistry Applications and Life Science(M【PED only】 D), and Energy and Sustainable Chemistry(M)	Applied Electrochemistry, Material of Energy Conversion	○	○
Chemistry and Life Science	Chemistry Applications and Life Science	MISUMI Ryuta	Associate Prof.	Chemistry Applications and Life Science(MD)	Fluid Mixing and Agitation, Crystallization, Computational Fluid Dynamics, Transport Phenomena	○	○
Chemistry and Life Science	Chemistry Applications and Life Science	MUROMACHI Sanehiro	Associate Prof.	Chemistry Applications and Life Science(M【PED only】 D), Energy and Sustainable Chemistry(M), and Energy Materials(D)	Gas hydrate, Energy process, Crystal engineering	○	○

Department	Unit	Name	Title	Specialization (M: Master's program) (D: Doctoral program)	Research Field	Type of Students Accepted	
						Doctoral	Master's
Chemistry and Life Science	Chemistry Applications and Life Science	AIHARA Masahiko	Lecturer	Chemistry Applications and Life Science(MD)	Chemical Energy Engineering, Chemical Reaction Engineering , Membrane Separation, Green Hydrogen	○	○
Mathematics, Physics, Electrical Engineering and Computer Science	Mathematical Sciences	UEKI Seiichiro	Professor	Mathematical Sciences(MD)	analytic function spaces and operators	○	○
Mathematics, Physics, Electrical Engineering and Computer Science	Mathematical Sciences	KAJIWARA Takeshi	Professor	Mathematical Sciences(MD)	Algebraic and Arithmetic Geometry	○	○
Mathematics, Physics, Electrical Engineering and Computer Science	Mathematical Sciences	KUROKI Manabu	Professor	Mathematical Sciences(MD)	Statistical Causal Inference	○	○
Mathematics, Physics, Electrical Engineering and Computer Science	Mathematical Sciences	TAKEI Masato	Professor	Mathematical Sciences(MD)	Spatial Stochastic Models, Stochastic Process	○	○
Mathematics, Physics, Electrical Engineering and Computer Science	Mathematical Sciences	HONDA Atsufumi	Associate Prof.	Mathematical Sciences(MD)	Differential Geometry, Submanifold Theory, Singularity Theory	○	○
Mathematics, Physics, Electrical Engineering and Computer Science	Physics	KATAYAMA Ikufumi	Professor	Physics(MD)	Terahertz and Ultrafast Spectroscopy	○	○
Mathematics, Physics, Electrical Engineering and Computer Science	Physics	HONG Feng-Lei	Professor	Physics(MD)	Precision Spectroscopy, Quantum Measurement	○	○
Mathematics, Physics, Electrical Engineering and Computer Science	Physics	KOSAKA Hideo	Professor	Physics(MD)	Quantum Computer, Quantum Communication, Quantum Information Physics	○	○
Mathematics, Physics, Electrical Engineering and Computer Science	Physics	SATO Jo	Professor	Physics(MD)	Elementary Particle Physics (Theory)	○	○
Mathematics, Physics, Electrical Engineering and Computer Science	Physics	SEKIYA Takao	Professor	Physics(MD)	Solid State Physics, High Pressure Physics	○	○
Mathematics, Physics, Electrical Engineering and Computer Science	Physics	MINAMINO Akihiro	Professor	Physics(MD)	Neutrino Physics, Particle Physics	○	○
Mathematics, Physics, Electrical Engineering and Computer Science	Physics	RAEBIGER Hannes	Professor	Physics(MD)	Physics, Quantum chemistry, Material Science	○	○
Mathematics, Physics, Electrical Engineering and Computer Science	Physics	AKAMATSU Daisuke	Associate Prof.	Physics(M)	Quantum Electronics, Quantum Metrology, Quantum Optics, Atomic Physics	—	○
Mathematics, Physics, Electrical Engineering and Computer Science	Physics	UEHARA Masatomo	Associate Prof.	Physics(MD)	Solid State Physics, Materials Science	○	○
Mathematics, Physics, Electrical Engineering and Computer Science	Physics	OHNO Shinya	Associate Prof.	Physics(MD)	Surface Physics	○	○
Mathematics, Physics, Electrical Engineering and Computer Science	Physics	KATAYOSE Yusaku	Associate Prof.	Physics(MD)	Cosmic Ray Physics	○	○
Mathematics, Physics, Electrical Engineering and Computer Science	Physics	SHIMAZU Yoshihiro	Associate Prof.	Physics(MD)	Experimental Solid State Physics	○	○
Mathematics, Physics, Electrical Engineering and Computer Science	Physics	SHUDO Ken-ichi	Associate Prof.	Physics(MD)	Surface Physics	○	○

Department	Unit	Name	Title	Specialization (M: Master's program) (D: Doctoral program)	Research Field	Type of Students Accepted	
						Doctoral	Master's
Mathematics, Physics, Electrical Engineering and Computer Science	Physics	SHIRASAKI Ryoen	Associate Prof.	Physics(MD)	Condensed Matter Physics, Complex Systems	○	○
Mathematics, Physics, Electrical Engineering and Computer Science	Physics	BAMBA Motoaki	Associate Prof.	Physics(M)	Quantum theory of light-matter interaction	—	○
Mathematics, Physics, Electrical Engineering and Computer Science	Physics	HORIKIRI Tomoyuki	Associate Prof.	Physics(MD)	Quantum Information, Quantum Optics	○	○
Mathematics, Physics, Electrical Engineering and Computer Science	Electrical and Computer Engineering	AKATSU Kan	Professor	Applied Physics(MD), Information Systems(MD), Electrical and Computer Engineering(MD), and Integrated Electronics(M)	Electric Machine design, analysis, control by using Power Electronics Technique	○	○
Mathematics, Physics, Electrical Engineering and Computer Science	Electrical and Computer Engineering	ARAKAWA Taro	Professor	Applied Physics(MD), Information Systems(MD), Electrical and Computer Engineering(MD), and Integrated Electronics(M)	Optoelectronics, Quantum Nano Structures, Semiconductor Photonic Devices, Optical Bio/Gas Sensors	○	○
Mathematics, Physics, Electrical Engineering and Computer Science	Electrical and Computer Engineering	ICHIGE Koichi	Professor	Applied Physics(MD), Information Systems(MD), Electrical and Computer Engineering(MD), and Integrated Electronics(M)	Digital Signal Processing, Image Processing, Wireless Communication	○	○
Mathematics, Physics, Electrical Engineering and Computer Science	Electrical and Computer Engineering	SEKIGUCHI Koji	Professor	Applied Physics(MD), Information Systems(MD), Electrical and Computer Engineering(MD), and Integrated Electronics(M)	Spintronics, Magnonics, Energy harvesting	○	○
Mathematics, Physics, Electrical Engineering and Computer Science	Electrical and Computer Engineering	TAKEMURA Yasushi	Professor	Applied Physics(MD), Information Systems(MD), Electrical and Computer Engineering(MD), and Integrated Electronics(M)	Magnetics for Biomedical Applications, Magnetic Sensors	○	○
Mathematics, Physics, Electrical Engineering and Computer Science	Electrical and Computer Engineering	TSUJI Takao	Professor	Applied Physics(MD), Information Systems(MD), Electrical and Computer Engineering(MD), and Integrated Electronics(M)	Power system engineering, Smartgrid, Renewable energy source	○	○
Mathematics, Physics, Electrical Engineering and Computer Science	Electrical and Computer Engineering	BABA Toshihiko	Professor	Applied Physics(MD), Information Systems(MD), Electrical and Computer Engineering(MD), and Integrated Electronics(M)	Optoelectronics, Nano-photonics, Silicon photonics, IoT sensor	○	○
Mathematics, Physics, Electrical Engineering and Computer Science	Electrical and Computer Engineering	HAMAGAMI Tomoki	Professor	Applied Physics(MD), Information Systems(MD), Electrical and Computer Engineering(MD), and Integrated Electronics(M)	Intelligent Systems, Machine Learning	○	○
Mathematics, Physics, Electrical Engineering and Computer Science	Electrical and Computer Engineering	FUKUNAGA Kaori	Professor	Applied Physics(MD), Information Systems(MD), Electrical and Computer Engineering(MD), and Integrated Electronics(M)	Electromagnetic Sensing, Nondestructive Inspection, Heritage Science	○	○
Mathematics, Physics, Electrical Engineering and Computer Science	Electrical and Computer Engineering	FUJIMOTO Yasutaka	Professor	Applied Physics(MD), Information Systems(MD), Electrical and Computer Engineering(MD), and Integrated Electronics(M)	Manufacturing Automation, Discrete Event Systems, Motion Control, Robotics, Electrical Machinery	○	○
Mathematics, Physics, Electrical Engineering and Computer Science	Electrical and Computer Engineering	YOSHIKAWA Nobuyuki	Professor	Applied Physics(MD), Information Systems(MD), Electrical and Computer Engineering(MD), and Integrated Electronics(M)	Integrated Circuit, Electronics Devices, Superconductivity Electronics, Quantum Engineering	○	○
Mathematics, Physics, Electrical Engineering and Computer Science	Electrical and Computer Engineering	ISHIKAWA Naoki	Associate Prof.	Applied Physics(M), Information Systems(M), Electrical and Computer Engineering(M), and Integrated Electronics(M)	Mobile Network, Wireless Signal Processing, Space-Time Coding	—	○
Mathematics, Physics, Electrical Engineering and Computer Science	Electrical and Computer Engineering	OHTSUKA Kazuhiro	Associate Prof.	Applied Physics(MD), Information Systems(MD), Electrical and Computer Engineering(MD), and Integrated Electronics(M)	Multimodal Informatics, Social Signal Processing, Communication Data Science	○	○
Mathematics, Physics, Electrical Engineering and Computer Science	Electrical and Computer Engineering	OHTSUKI Takashi	Associate Prof.	Applied Physics(M), Information Systems(M), Electrical and Computer Engineering(M), and Integrated Electronics(M)	Energy systems engineering, Energy and electricity economics, Climate change	—	○
Mathematics, Physics, Electrical Engineering and Computer Science	Electrical and Computer Engineering	OYA Takahide	Associate Prof.	Applied Physics(MD), Information Systems(MD), Electrical and Computer Engineering(MD), and Integrated Electronics(M)	Nanotechnology, Carbon Nanotube, Nonlinear system	○	○
Mathematics, Physics, Electrical Engineering and Computer Science	Electrical and Computer Engineering	KUGA Nobuhiro	Associate Prof.	Applied Physics(MD), Information Systems(MD), Electrical and Computer Engineering(MD), and Integrated Electronics(MD)	Microwave Engineering and measurement, Antenna Engineering	○	○

Department	Unit	Name	Title	Specialization (M: Master's program) (D: Doctoral program)	Research Field	Type of Students Accepted	
						Doctoral	Master's
Mathematics, Physics, Electrical Engineering and Computer Science	Electrical and Computer Engineering	SHIMONO Tomoyuki	Associate Prof.	Applied Physics(MD), Information Systems(MD), Electrical and Computer Engineering(MD), and Integrated Electronics(MD)	Motion control, Haptics, Mechatronics, Robotics, Electrical Machinery	○	○
Mathematics, Physics, Electrical Engineering and Computer Science	Electrical and Computer Engineering	SUGIMOTO Chika	Associate Prof.	Applied Physics(MD), Information Systems(MD), Electrical and Computer Engineering(MD), and Integrated Electronics(MD)	Perceptual Information Processing, Human Sensing, Medical ICT	○	○
Mathematics, Physics, Electrical Engineering and Computer Science	Electrical and Computer Engineering	SUN Heming	Associate Prof.	Applied Physics(M), Information Systems(M), Electrical and Computer Engineering(M), and Integrated Electronics(M)	Video processing, Computer vision, Deep learning, Embedded system	—	○
Mathematics, Physics, Electrical Engineering and Computer Science	Electrical and Computer Engineering	NAKATA Masaya	Associate Prof.	Applied Physics(MD), Information Systems(MD), Electrical and Computer Engineering(MD), and Integrated Electronics(M)	Soft computing, Optimization, Data mining	○	○
Mathematics, Physics, Electrical Engineering and Computer Science	Electrical and Computer Engineering	NISHIJIMA Yoshiaki	Associate Prof.	Applied Physics(MD), Information Systems(MD), Electrical and Computer Engineering(MD), and Integrated Electronics(M)	Plasmonics, micro/nanophotonics, Nano Photonics Sensors, Photo-Thermal Energy Conversions	○	○
Mathematics, Physics, Electrical Engineering and Computer Science	Electrical and Computer Engineering	MIZUNO Yosuke	Associate Prof.	Applied Physics(MD), Information Systems(MD), Electrical and Computer Engineering(MD), and Integrated Electronics(M)	Sensing Photonics, Fiber Optics, Nonlinear Optics, Opto- Electronics	○	○
Mathematics, Physics, Electrical Engineering and Computer Science	Electrical and Computer Engineering	YAMANASHI Yuki	Associate Prof.	Applied Physics(MD), Information Systems(MD), Electrical and Computer Engineering(MD), and Integrated Electronics(M)	Electron/electric material engineering, Electronic device/electronic equipment	○	○

V. Education under special exception regarding educational systems pursuant to Article 14 of the Standards for Establishment of Graduate Schools (Special exception for graduate education for professional engineers and researchers)

In recent years, professional engineers, researchers, and the like are increasingly feeling the need for continued education or refresher training, as well as doctoral degrees offered by graduate schools. Unfortunately, their opportunities to pursue graduate education based on standard systems are limited because they need to leave their work at least for 2 years to complete master's programs and 3 years to complete doctoral programs.

Meanwhile, Article 14 of the Standards for Establishment of Graduate Schools (Ordinance by the MEXT) stipulates that "education can be conducted by organizing courses and research guidance at night, during specific hours or periods, or in other appropriate manners if a need for special arrangements in graduate programs is recognized." According to the special consideration for studies by professionals in this article, special exceptions in educational systems have been put in place for professional engineers and researchers pursuing studies at our graduate schools.

The rules are as follows:

- (1) In principle, students must study on campus full time for one year as part of a 2-year master's program and a 3-year doctoral program.
- (2) Special courses are organized during evenings (5:50 p.m.–7:20 p.m.) on weekdays, although students may attend courses offered during any time period including the day.
- (3) During the one-year period of full-time study in a master's program and focusing on master's research, a student should plan their program so that the necessary credits can be acquired in evening courses (5:50 p.m.–7:20 p.m.). During this period, students should take courses during the day only when they are not offered in the evening.
- (4) When preparing to enroll, seek guidance from your supervisor and make a plan to study for 2 years in a master's program and 3 years in a doctoral program.
- (5) If it is impossible to complete your field of study in the defined course term due to your work, you should consider an extended plan with 3–4 years of master's study and 4–5 years of doctoral study.
- (6) Gain approval each time you change your study plan by using the special exception.

By applying the abovementioned special exception, our Graduate School of Engineering Science makes it possible for professionals to limit the period they have to leave their jobs to one year. In this manner, we seek to provide opportunities for engineers and other professionals who have found it difficult to pursue continued or refresher training through graduate studies in normal education systems. We flexibly approve research topics including practical research by companies as long as they are deemed appropriate for master's and doctoral research. This is because another purpose of the special exception is to contribute to the advancement of new science and technologies by stimulating exchange between our university and industry through admitted professionals.

VI. Students with extended enrollment status

Students with extended enrollment status are those who were approved to complete their studies according to a certain plan for a period longer than the standard duration for completing master's programs (2 years) and doctoral programs (3 years), in consideration of their employment and other circumstances.

Unlike other students, students who are granted extended enrollment status can complete their studies, regardless of the duration, for the same tuition charged for the standard duration for completing master's programs (2 years) and doctoral programs (3 years).

1. Eligibility

Eligibility for the extended enrollment status is granted to successful applicants who pass a special screening of professionals who intend to remain employed after admission.

2. Application procedure

Use the following procedure to apply for extended enrollment status. Beware that failure to perform any of the following steps leads to disqualification from the review.

(1) Before application

State your intention to apply for the extended enrollment status when you contact your desired supervisor.

(2) During application

Select the check box for extended enrollment status on your application for admission.

(3) During admission procedures

In order to apply for extended enrollment status, submit documents (i) and (ii) during your admission procedure.

(i) Application for extended enrollment status (Annexed Form 1 to be provided along with other documents for the admission procedures only to those who properly performed steps (1) and (2))

(ii) Employment certificate or another document to prove your current employment

(iii) Submit these documents **between Friday, September 6– Thursday, September 12, 2024 (Admission in October) or between Wednesday, March 5 and Monday March 10 2025 (Admission in April) (no exceptions)** along with other admission documents to the Graduate School of Engineering Science Section.

3. Decision on status

Application documents are reviewed to make a decision on the status applied for. The applicant is notified of the decision in mid- October (Admission in October) or mid-April (Admission in April).

4. Enrollment period

Students with extended enrollment status may study at master's programs for more than 2 years and 3 months up to 4 years and at doctoral programs for more than 3 years and 3 months up to 6 years.

Studies can be completed every March, June, September, and December. Specify the planned month and year for completing your studies on your application for extended enrollment status.

5. Annual tuition

Annual tuition for students with extended enrollment status is calculated by multiplying the standard annual tuition by the standard number of years for completing a program, then dividing it by the number of years of enrollment.

(Example calculation 1) Three years of master's study by an applicant granted with the extended enrollment status

$$\begin{array}{cccccc} 535,800 \text{ yen} & \times & 2 \text{ years} & / & 3 \text{ years} & = 357,200 \text{ yen} \\ \text{(Standard annual tuition)} & & & & \text{(Standard duration of master's programs)} & \text{(Approved period of study)} & \text{(Annual tuition for students with extended enrollment status)} \end{array}$$

(Example calculation 2) Five years of doctoral study by an applicant granted with the extended enrollment status

$$\begin{array}{cccccc} 535,800 \text{ yen} & \times & 3 \text{ years} & / & 5 \text{ years} & = 321,480 \text{ yen} \\ \text{(Standard annual tuition)} & & \text{(Standard duration of doctoral programs)} & & \text{(Approved period of study)} & \text{(Annual tuition for students with extended enrollment status)} \end{array}$$

6. Shortening enrollment period

Students with extended enrollment status can shorten their enrollment period.

In order to shorten your enrollment period, submit an "Application for shortening the enrollment period of a student with extended enrollment status" and gain the necessary approval.

* Ask for more details at the office.

7. Extending enrollment period

Enrollment periods can be further extended for students with extended enrollment status under special circumstances.

In order to extend your enrollment period, submit an "Application for extending the enrollment period of a student with extended enrollment status" and gain the necessary approval. Note that the enrollment period can only be extended once.

No one can be enrolled for more than 4 years in a master's program and more than 6 years in a doctoral program. After the extension of enrollment period, the annual tuition is calculated by dividing the remaining amount of tuition after subtracting the paid tuition from the entire standard period of studies (2 years for master's programs and 3 years for doctoral programs).

8. Other matters

If you wish to apply for extended enrollment status, be sure to consult closely with your desired supervisor before applying for admission.

VII. Use of ChatGPT and other Generative AI Tools

We are urging our students to take note of the precautions concerning the use of generative AI tools including ChatGPT. Regarding the documents necessary for our entrance examination, please prepare and submit them based on the following reminder. In addition, international students must abide by their national and regional policies, laws, and regulations as required.

Reminder

Information entered into generative AIs could be used for AI learning or leaked to unintended parties. Furthermore, the source of the information obtained from generative AIs is not clear and may contain fabricated data, biased views, or ethically problematic expressions.

Regarding an application form and other necessary documents, please prepare them in accordance with our Admission Policy and submit them at your own responsibility, ensuring that no wrongdoing is being committed and that no discrepancies in academic skills are suspected after admission.

VIII. Access

For details on how to get to the University, please visit the "Access" page on the University's website. (<https://www.ynu.ac.jp/english/about/access/access/>)

[Note 1] Please note that the sidewalks from Hazawa Yokohama Kokudai Station to the university are very narrow in some places, so please be careful.

[Note 2] The number of buses and passengers are limited, and buses are greatly affected by traffic congestion and weather conditions. Therefore, we do not recommend the use of buses on the day of the examination.

* No entry required

Examinee's number *

Date : Day Month, Year

Detailed Statement of Application Documents (Eligibility Assessment)

Master's Program at Graduate School of Engineering Science, Yokohama National University

Name _____

Unit _____

Specialization _____

Submit this statement as an attachment along with your application documents. Enclose the necessary documents and put a circle in each corresponding check box.

(Check box)

Application document	Form	Note	General		Professional
			Eligibility 8	Eligibility 5-2, 9, 10	
Application for certificate of eligibility	9	Print out the form after downloading it from the website of the Graduate School of Engineering Science.			
Application for certificate of eligibility	11	Print out the form after downloading it from the website of the Graduate School of Engineering Science.			
Application for certificate of eligibility	12	Print out the form after downloading it from the website of the Graduate School of Engineering Science.			
Eligibility Accreditation Record	13	Print out the form after downloading it from the website of the Graduate School of Engineering Science.			
Certificate of eligibility and recommendation letter	14	Print out the form after downloading it from the website of the Graduate School of Engineering Science. Applicants enrolled at YNU's College of Engineering Science do not need to enter the name of the president or dean and obtain their seal. * The certificate needs to be sealed by the person recommending each applicant.			
Certificate of (expected) graduation or enrollment period from the most recent educational level	-	To be prepared by the president or dean of the school where the applicant was or is enrolled.			
Transcript from the school where the applicant was or is enrolled.	-	To be prepared by the president or dean of the school where the applicant was or is enrolled.			
Documents presenting course criteria	-	List of credits to be earned for graduation both in total and by category, and courses offered in respective categories, etc.			
A size-L3 return envelope	-	Write the recipient's name and address on the envelope and affix stamps (354 yen). Remember that the recipient must be in Japan.			
Record of Research Achievements	16	Print out the form after downloading it from the website of the Graduate School of Engineering Science.			
(Desired) Research Plan	17	Print out the form after downloading it from the website of the Graduate School of Engineering Science.			
Approval of examination and recommendation letter	-	[Applicant with an employer] To be prepared in any format by the applicant's supervisor at work.			
Certificate of research or professional assignments	-	[Applicant with work experience] To be prepared in any format.			

* No entry required

Examinee's number *

Date : Day Month, Year

Detailed Statement of Application Documents**Master's Program at Graduate School of Engineering Science, Yokohama National University**

Name _____

Unit _____

Specialization _____

Educational program _____

Submit this statement as an attachment along with your application documents. Enclose the necessary documents and put a circle in each corresponding check box.

(Check box)

Application document	Form	Note	Japanese			International student		
			General		Professional	General		Professional
			Written exam	Special admission		Written exam	Special admission	
Application for admission	1-1	Print out the form after downloading it from YNU Web Application System.						
Photo	-	Attach it to your application for admission.						
Certificate of (expected) graduation	-	To be prepared by the president or dean of the graduating (enrolled) school.						
Certificate of degree	-	The degree obtained must be stated on the certificate. If a copy of a diploma is used as a substitute, the original must be presented at the Graduate School of Engineering Science Section. This certificate is not required from an applicant claiming Eligibility (1).	/	/	/			
Transcript	-	To be prepared by the president or dean of the graduating (enrolled) school.						
Certificate of resident status	-	Foreigners living in Japan should submit copies of both sides of their residence cards. Other foreigners should submit a copy of their passport.	/	/	/			
Curriculum Vitae	19-1	Print out the form after downloading it from YNU Web Application System. This form is not required from an applicant claiming Eligibility (1).	/	/	/			
Provisional Acceptance Letter	19-2	Print out the form after downloading it from the website of the Graduate School of Engineering Science. Obtain a signature from the prospective supervisor.	/	/	/			
Summary of research to date and research plan (Advanced Chemistry)	21	(Only applicants for Advanced Chemistry Unit should submit) Print out the form after downloading it from the Graduate School's website.			/			/
Government sponsorship certificate	-	(Submit only for Japanese government-financed (MEXT) international students) No copies are accepted.			/			/
Certificate of eligibility	15-1	Print out the form after downloading it from the website of the Graduate School of Engineering Science (to be sealed). Applicants who graduated or are expected to graduate from YNU's College of Engineering or College of Engineering Science do not need to enter the name of the president or dean and obtain their seal.	/	/	/	/	/	/
Recommendation letter	15-2	Print out the form after downloading it from the website of the Graduate School of Engineering Science.	/	/	/	/	/	/
Motivation letter	18	Print out the form after downloading it from the website of the Graduate School of Engineering Science.	/	/	/	/	/	/
Enrollment pledge	20	Print out the form after downloading it from the website of the Graduate School of Engineering Science.	/	/	/	/	/	/
Copy of certificate of eligibility	-	(Only applicants who have passed an eligibility assessment.) The certificate of eligibility is enclosed along with the result of the eligibility assessment.		/	/		/	/
Return envelope	31	Print out the label for a return envelope (Form 31) from YNU Web Application System, then attached the filled-out label to a Size-2 envelope (24 cm × 33.2 cm).affix stamps (400 yen) for express mail. Remember that the recipient must be in Japan.	/	/	/	/	/	/

* Students who have passed an eligibility assessment do not have to resubmit the documents that were submitted for that application.

Before filing your application, consult with the faculty member in charge of your desired field of study or faculty members serving as contact persons.

Consulted (Circle here)

CAMPUS MAP



YNU YOKOHAMA National University

ADMINISTRATION BUREAUS

- N1** ① Delivered Goods Acceptance and Inspection Center
- N2** ① Administration Bureau East Annex
Admissions Division (1F)
- ② Administration Bureau
- ③ Administration Bureau West Annex
- ④ Office Garage
- S1** ① Security Officers' Station
- S5** ① Student Center

1F: Center for Health Service Science, Navi Port
2F: Student Support Division, Educational Affairs Division,
Student Advisory Service, International Education Division
3F: Career Support Room, Harassment Consultation Office
IFGS Office

ADMINISTRATIVE OFFICES FOR GRADUATE SCHOOLS & UNDERGRADUATE COLLEGES

- N3** ④ Research Bldg.
College of Business Admin / Graduate School of International Social Sciences
- N4** ① Research Bldg.
College of Economics
- N8** ④ Administration
College of Engineering Science / Graduate School of Engineering Science
- S3** ③ Administration
College of Education / Graduate School of Education
- S5** ① Student Center
YNU Interfaculty Graduate School of Innovative and Practical Studies
- S5** ⑥ Engineering Science Lab.
College of Urban Sciences / Graduate School of Urban Innovation
- S7** ⑤ Environment and Information Sciences 1
Graduate School of Environment and Information Sciences

COMMON FACILITIES FOR RESEARCH AND EDUCATION

- N2** ③ Gender Equality Section
- ④ Center for Economic Growth and Strategy
- N4** ① Global-Local Education and Research Center
- N7** ② Cross-Faculty Research Bldg.B
- ④ Green Hydrogen Research Lab.
- ⑤ Cross-Faculty Research Bldg.A
- N8** ② Instrumental Analysis Center
- N9** ② Research Initiatives and Promotion Organization,
Cooperative Research and Development Center
- S1** ② Education and Culture Hall
- ③ International Student Center
- S5** ② Annex Bldg. of Information Technology Service
Center, Admission and Education Center,
Graduate School Education Center
- ③ Center for Risk Management and Safety Sciences
- ④ Information Technology Service Center
- S6** ② Cross-Faculty Research Bldg.D
- ④ Cross-Faculty Research Bldg.C
- S7** ④ Institute of Advanced Sciences, Center for Creation of
Symbiosis Society with Risk, Advanced Chemical Energy
Research Center, Quantum Information Research
Center, Typhoon Science and Technology Research Center
- S8** ① Facility for RI Research and Education
- S9** ① Incubation Facility

WELFARE FACILITIES

- N10** ④ S-Garden (Cafeteria, Convenience Store)
- ⑤ Cafeteria 2, COOP
- S1** ④ Cafeteria 1
- ⑤ University Hall, COOP (HQ)

STUDENT SPORTS AND RECREATION FACILITIES

- S0** ① Student Club House: Sports Club
- ② Control Office and Sports Facilities
- S1** ① Student Activities Facilities
- ② Gymnasium
- ③ Archery Target Range



- Cafeteria and Lunch Box Stand
- Convenience Store
- ATM
- Student / Educational Affairs Section
- PC Room
- Certificate Issuing Machine
- AED (automatic external defibrillator)
- Autobike Parking
- Parking Lot
- Bus Stop
- Bus Stop (inside campus)

LIBRARIES

- S3** ⑥ Central Library
- S7** ③ Science and Technology Library

MONITORING CENTERS

- N7** ① Energy Center: General Machine Plant
- N9** ① Wastewater Treatment Facility

CLASSROOM BUILDINGS OF GRADUATE SCHOOLS & UNDERGRADUATE COLLEGES

- N3** ① Business Administration Research Bldg.
- ② International Graduate School of Social Sciences
- ③ Lecture Hall 2 (Bus. Admin)
- ⑤ Lecture Hall 1 (Bus. Admin)
- N4** ② Lecture Hall 1 (Econ)
- ③ Lecture Hall 2 (Econ)
- ④ New Research Bldg. (Econ)
- ⑤ Law Bldg.
- N5** ① Structure Lab. (Architecture and Building Science)
- ② Materials and Environment Testing Lab.
- ③ Architecture and Building Science Bldg.
- N6** ① Electrical and Computer Engineering Bldg. 2

- N6** ② Electrical and Computer Engineering Bldg.
- ③ Voltage Room
- ④ Mechanical Engineering Bldg. 2
- ⑤ Mechanical Engineering and Materials Science Bldg.
- ⑥ Materials Science and Engineering Lab.
- N7** ③ High Voltage Research Lab.
- ⑥ Machine Shop A
- ⑦ Machine Shop B
- ⑨ Mechanical Engineering Lab.
- N8** ① Low Temperature Engineering Research Lab.
- ③ Energy Engineering Bldg.
- ⑤ Chemical Engineering and Safety Engineering Bldg.
- ⑥ Hazardous Materials Inhouse Storage
- N10** ① Naval Architecture and Ocean Engineering Bldg. A
- ② Ship Model and Seakeeping Basin
- ③ Naval Architecture and Ocean Engineering Bldg. B
- S2** ① Lecture Hall (Us)
- ② Lecture Hall 7 (Ed)
- ③ Education Design Center
- S3** ① Lecture Hall 6 (Ed)
- ② Research Bldg.1 (Ed)

- S3** ④ Research Bldg.2 (Ed)
- ⑤ Annex to Faculty of Education Bldg. (Research)
- S4** ① Music
- ② Fine Arts
- ③ Research Bldg.3 (Ed)
- S5** ③ Science Research Bldg.
- ⑤ Lecture Hall A (Eng)
- ⑥ Engineering Science Lab.
- ⑦ Lecture Hall A (107) (Eng)
- ⑧ Lecture Hall B (Eng)
- ⑨ Lecture Hall C (Eng)
- S6** ① Environment and Information Sciences 4
- ③ Environment and Information Sciences 3
- S7** ① Science and Engineering Lab. for Graduate School
- ② Bioengineering Computer Engineering Lab.
- ⑥ Chemistry Bldg.
- S8** ② Structure Lab. (Civil Engineering)
- ③ Civil Engineering Bldg.
- ④ Hydraulic Lab.
- S9** ① General Research Bldg. S, E
- ② General Research Bldg. W

Graduate School of Engineering Science Section

Yokohama National University

79-5 Tokiwadai, Hodogaya-ku, Yokohama, 240-8501 JAPAN

E-mail ses.daigakuin-eng@ynu.ac.jp

<https://www.fse.ynu.ac.jp/index.html>

[Counter hours] 8:30-12:45, 13:45-17:00

Excluding Saturdays, Sundays, national holidays, and summer holidays (August 13th to August 19th).